

Customer :
Project Name :
Project No. :
Revision No. :

SPECIFICATION for INDUCTION MOTOR



0		For Bidding			
No.	DATE	DESCRIPTION	PREPARED BY	CHECKED BY	APPROVED BY



AC INDUCTION MOTOR DATA SHEET

Explosion Proof type

Catalog No.		IXHHI30-36-286TSC		Item No.		Rev. No.		[]					
Project Name		Project No.		Quantity		sets							
GENERAL SPECIFICATION					PERFORMANCE DATA								
Frame Size		286TSC		Rated Output		22 kW		30 HP					
Type		XJP		Number of Poles		2							
Enclosure(Protection)		Totally Enclosed / IP55		Rotor Type		Squirrel Cage							
Method of Cooling		IC411(FC)		Starting Method*		D.O.L							
Rated Frequency		60 Hz		Rated Voltage		575 V		460 V		230 V			
Number of Phases		3		Current		Full Load		27.1 A		33.8 A	67.7 A		
Insulation Class		F				Locked-rotor**		685 %		685 %		685 %	
Temp. Rise at full load (by resistance method)				Efficiency									
at 1.0 S.F		80 deg. C											
Motor Location		<input type="checkbox"/> Indoor <input type="checkbox"/> Outdoor		50% Load		88.7 %							
Altitude		Less than 1,000 meter		75% Load		90.7 %							
Relative Humidity		Less than 80 %		100% Load		91.7 %							
Ambient Temp.		40 deg. C (Max.)		Power Factor(p.u)									
Duty Type		Continuous (S1)											
Service Factor		1.15											
Mounting		B35		Speed at Full Load		3560 r.p.m							
Bearing		Type		Anti-Friction		Torque							
		DE/N-DE		6310ZC3 / 6310ZC3									
		Lubricant		Grease(Polyrex-EM)									
External Thrust		Not applicable		Full Load		43.5 lb.ft							
Coupling Method		<input checked="" type="checkbox"/> Direct <input type="checkbox"/> V-belt		Locked-rotor**		160 %							
Shaft Extension		Single		Breakdown**		230 %							
Terminal Box		Main		Cast Iron		Moment of Inertia (J)							
		Aux.		No									
Location		Refer to Outline Drawing		Load(Max.)		28.400 lb.ft2							
Application				Motor		2.089 lb.ft2							
Area classification		Hazardous		Sound Pressure Level (No-load & mean value at 1m from motor)									
Type of Ex-Protection		Class I&II, Division 1											
Applicable Standard		NEMA MG1, CSA C390, UL674		86 dB(A)									
ACCESSORIES					SUBMITTAL DRAWING								
* W.T.D.(Thermostat, 145°C) : 1EA/Ph.					Outline Dimension Drawing \ Motor Weight(Approx.)								
					B35		LM-U0286C4SL001		410 lb.				
REMARK					<ol style="list-style-type: none"> 1. Premium efficiency according to NEMA MG1 2. Inverter Duty @ 1.0 Service Factor & Ambient max 45°C <ul style="list-style-type: none"> - . 4:1 CT (10:1 CT at 1hour Duty) - . 10:1 VT (20:1 VT at 50% load) - . CHP up to 1.5 times base speed, NEMA MG1 Part31 3. Class I, Division 1, Group C&D <ul style="list-style-type: none"> - . Temp.Code(Sine wave) : T2D at 40°C Amb./T2C at 55°C Amb. T4 with Winding Temperature Detector 4. Class II, Division 1, Group F&G <ul style="list-style-type: none"> - . Temp.Code(Sine wave) : T3B 								
										Date		DSND	
2024-08-08		S.H. Lee		I.K. Kim						R.G. Kim		S.W. Kim	
SPARE PARTS													

[Note] Others not mentioned in this data sheet shall be in accordance with maker standard.

Above technical data are only design values and shall be guaranteed with tolerance of applicable standard.

Inspection and performance test shall be done according to maker standard, if not mentioned.

* In case of Inverter-Fed Motor, performance data is based on sine wave tests. It may be different from test data of Inverter combined motor.

** Data is based on rated voltage & frequency and is expressed as a percentage of full-load value.

	REV	DATE	CONTENTS

4.72

CROWN TRITON

Premium Efficiency AC 3 Phase Motor

Explosion Proof

CC038A

30HP	2P	230/460V	Cat. No. IXHHI30-36-286TSC	Amps	67.7/33.8
Model	LATER		INS. Class F HD-F1	Hertz	60Hz
Type	XJP	Duty	CONT	Code	G
Frame	286TSC	Encl.	TEFC	S.F. 1.15	on sine wave power
Bearing	Drive	6310ZC3		S.F. 1.00	on PWM or IGBT power
	Opp.	6310ZC3		RPM	3560
Usable at	50Hz 25HP 380V 39.3A 2960rpm S.F.: 1.0 Eff.: 90.9% Code: H				
	50Hz 25HP 400/415V 37.9/37.1A 2960/2965rpm S.F.: 1.0 Eff.: 90.9/90.9% Code: J/J				
UL Certified for	Class I, Div. 1, Group C&D / Class I, Zone 1, Group II A & II B			Temp. Code	T2D at 40°C Amb. / T2C at 55°C Amb.
	10:1VT(20:1 at 50% load) 4:1CT(10:1 1hour duty at lowest RPM)				T4 With Thermostat
No.	-		Date	-	
			Weight	410 lb	

4M-136066
(NEMA 250~280Fr.)

Made in Korea H1

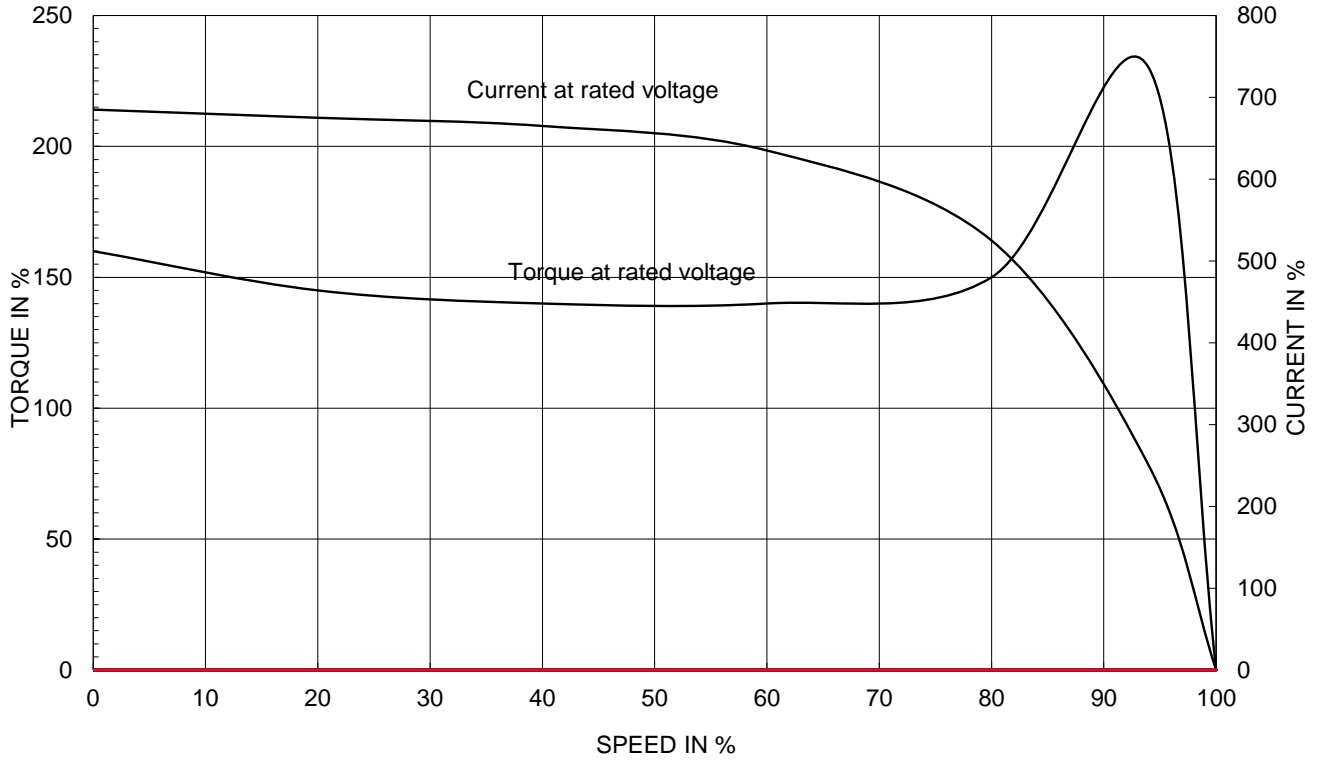
2.36

APPD BY	S.Y.KIM	UNIT	INCH	SUBJECT	UL Class I, Division1 (IXHHI)	DWG SIZE	A4 (1:1)
CHKD BY	I.K.KIM	SCALE	NONE	TITLE	NAMEPLATE DRAWING		
CHKD BY	R.G.KIM	PROJEC'N	3rd Angle				
DSND BY	S.H.LEE	DATE	2024.06.07				
				REF. NO	4M-136066	Sheet No. of	
				DWG NO	NP-IXHHI30-36-286TSC	Revision No. 0	

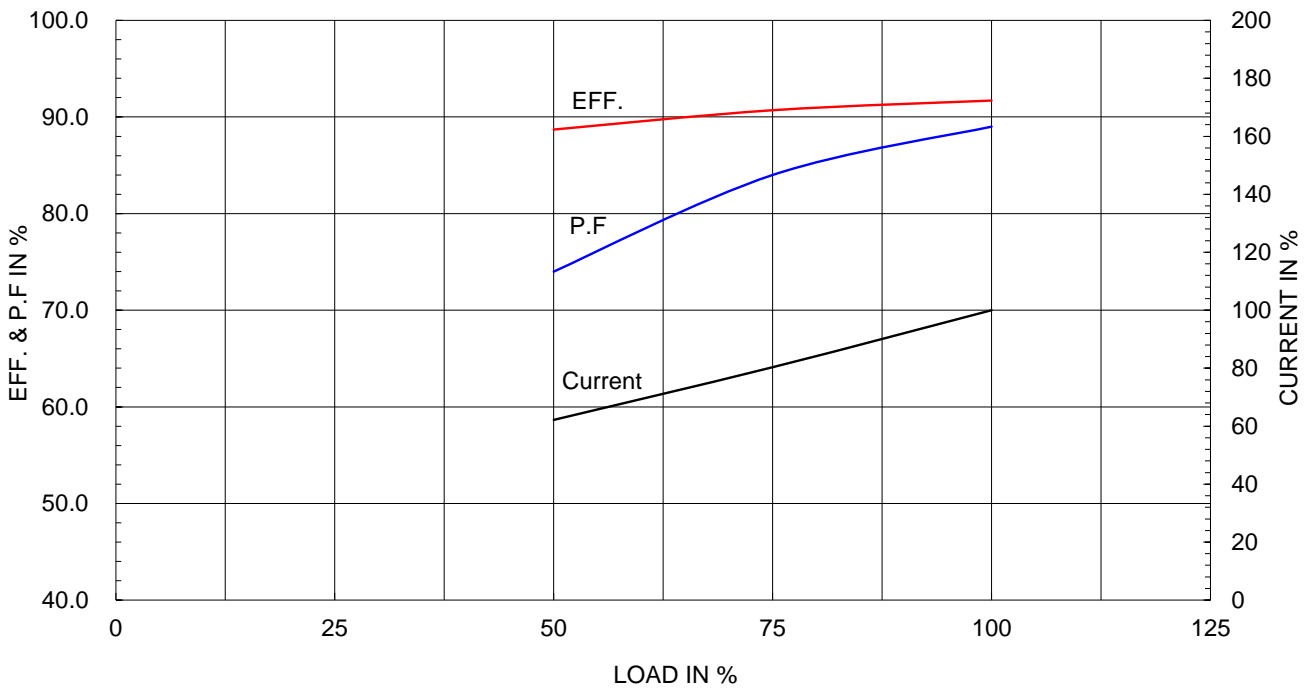
Type :	XJP
Full Load Torque :	43.5 lb.ft
Load moment of Inertia (J) :	28.400 lb.ft2
Motor moment of Inertia (J) :	2.089 lb.ft2

22kW	30HP	2 P	60 Hz
Speed at Full Load :			3560 RPM
Rated Voltage	575V	460V	230V
Full Load Current	27.1A	33.8A	67.7A

SPEED VS TORQUE & CURRENT CURVE



OUTPUT VS EFF., P.F & CURRENT CURVE

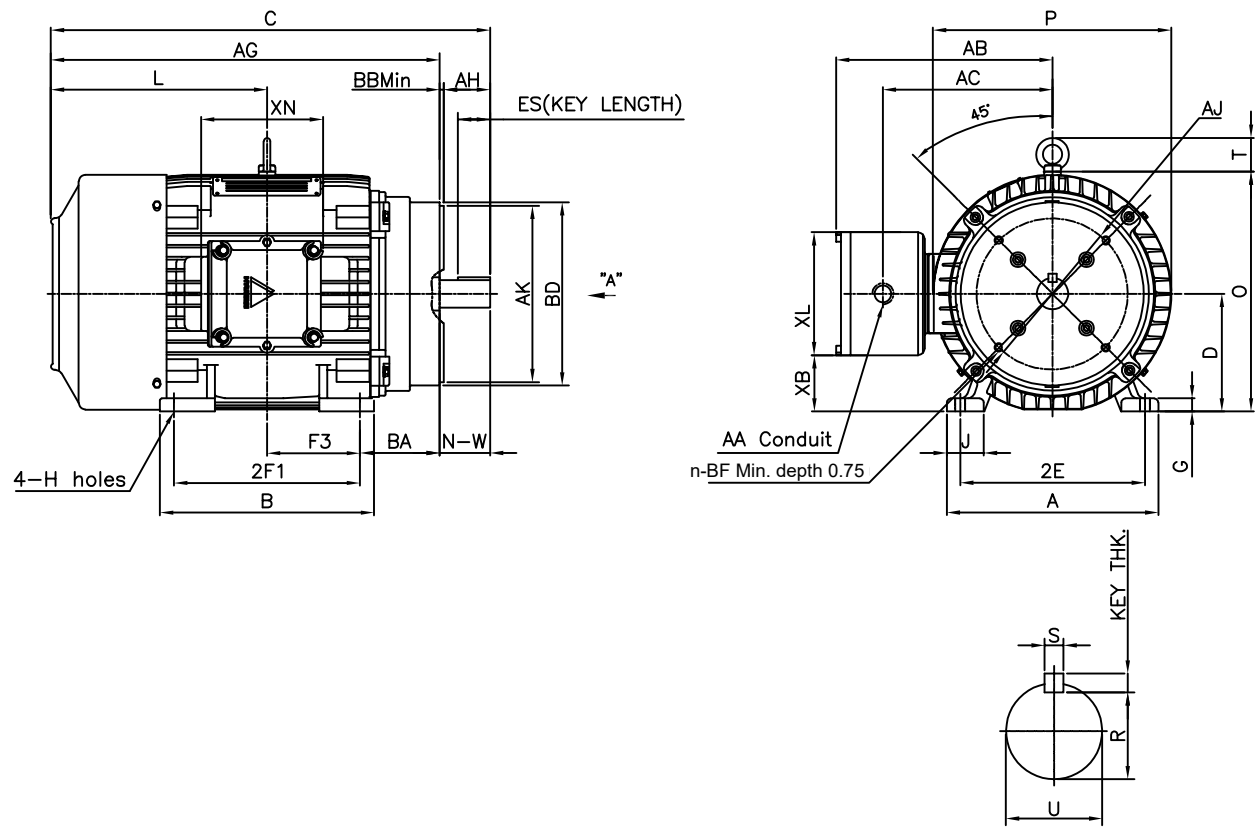


본 도면은 HD현대일렉트릭(주) 재산이며 허가없이 복사할 수 없음 (최급유위)

THIS DRAWING IS PROPRIETARY TO HYUNDAI ELECTRIC. NO PART OF THIS DRAWING MAY BE REPRODUCED WITHOUT THE PERMISSION OF HYUNDAI ELECTRIC.

▽	50S	REV	DATE	CONTENTS	REVD BY	CHKD BY	CHKD BY	APPD BY
▽▽	12.5S							
▽▽▽	3.2S							
▽▽▽▽	0.4S							

Class I Division 1



DIMENSIONS

M O U N T I N G									C O N D U I T B O X						APPROX. WGT.(LB)
A	B	2E	2F1	2F2	F3	G	J	H	AA	AB	AC	XB	XL	XN	
12.60	12.68	11.00	11.00	-	5.50	0.78	2.20	0.53	1.50	12.60	10.10	3.94	6.30	7.32	410

O V E R A L L										S H A F T				KEY THK.	B E A R I N G	
AG	BA	C	D	L	O	P	T	U	N-W	KEYWAY			DRIVE END		OPP. DRIVE END	
R	ES	S														
22.90	4.75	26.15	7.00	12.87	14.28	14.19	2.01	1.625	3.25	1.416	1.91	0.375	0.375	6310ZC3	6310ZC3	

C-FACE						
AJ	AK	BD	BB	BF	n	AH
9.00	10.50	10.90	0.25	1/2-13	4	3.00

NOTE

- 1.Dimension "D" tolerance : +0.00inch ~ -0.03inch (143TC-365TC) : +0.000inch ~ -0.06inch (404TC-449TC)
- 2.Dimension "U" tolerance : +0.000inch ~ -0.0005inch (143TC-215TC): +0.000inch ~ -0.001inch (254TC-449TC)
- 3.Dimension "R" tolerance : +0.000inch ~ - 0.015inch
- 4.Dimension "AK" tolerance : +0.000inch ~ -0.003inch (143TC-286TC): +0.000inch ~ -0.005inch (324TC-449TC)

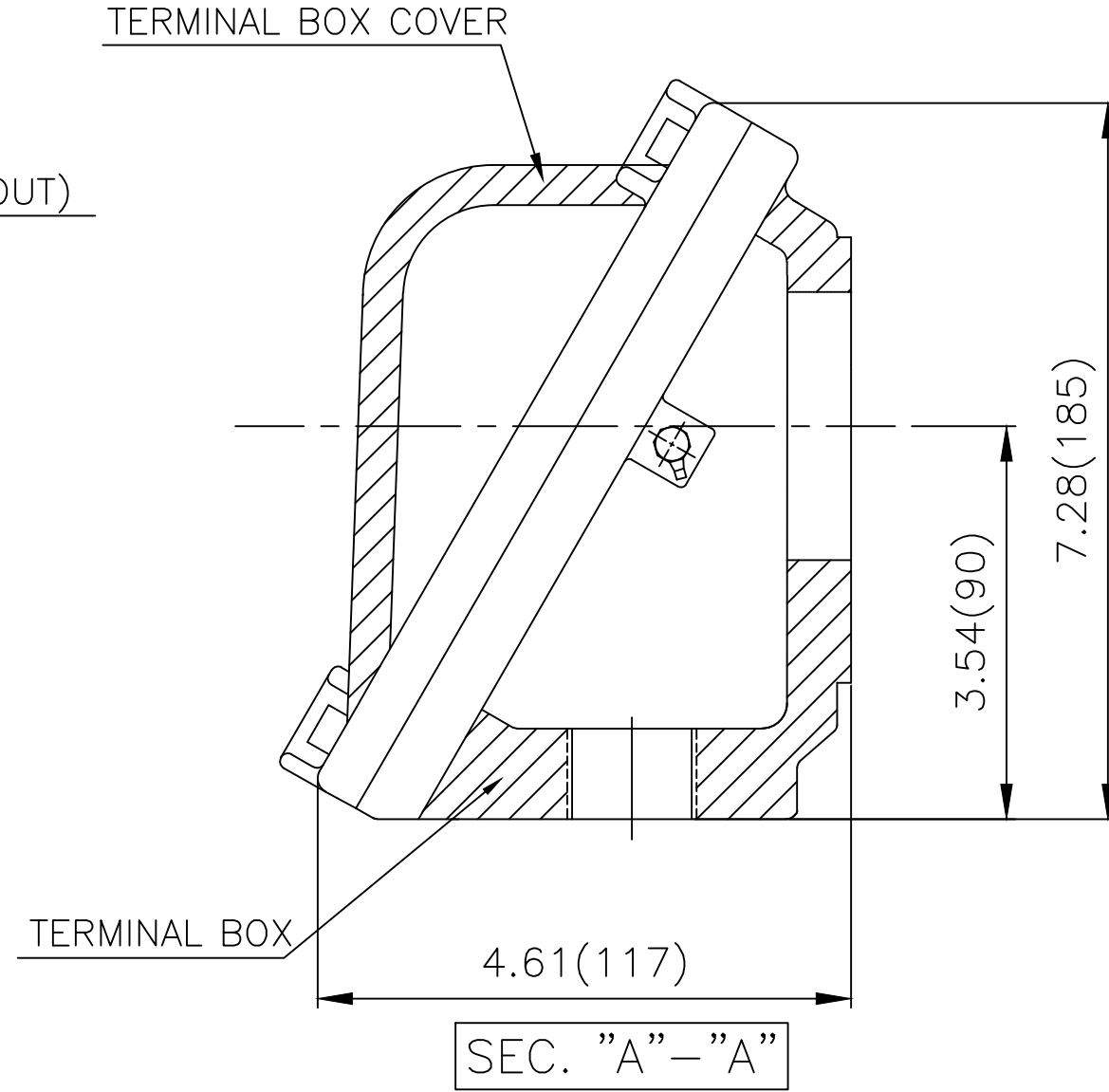
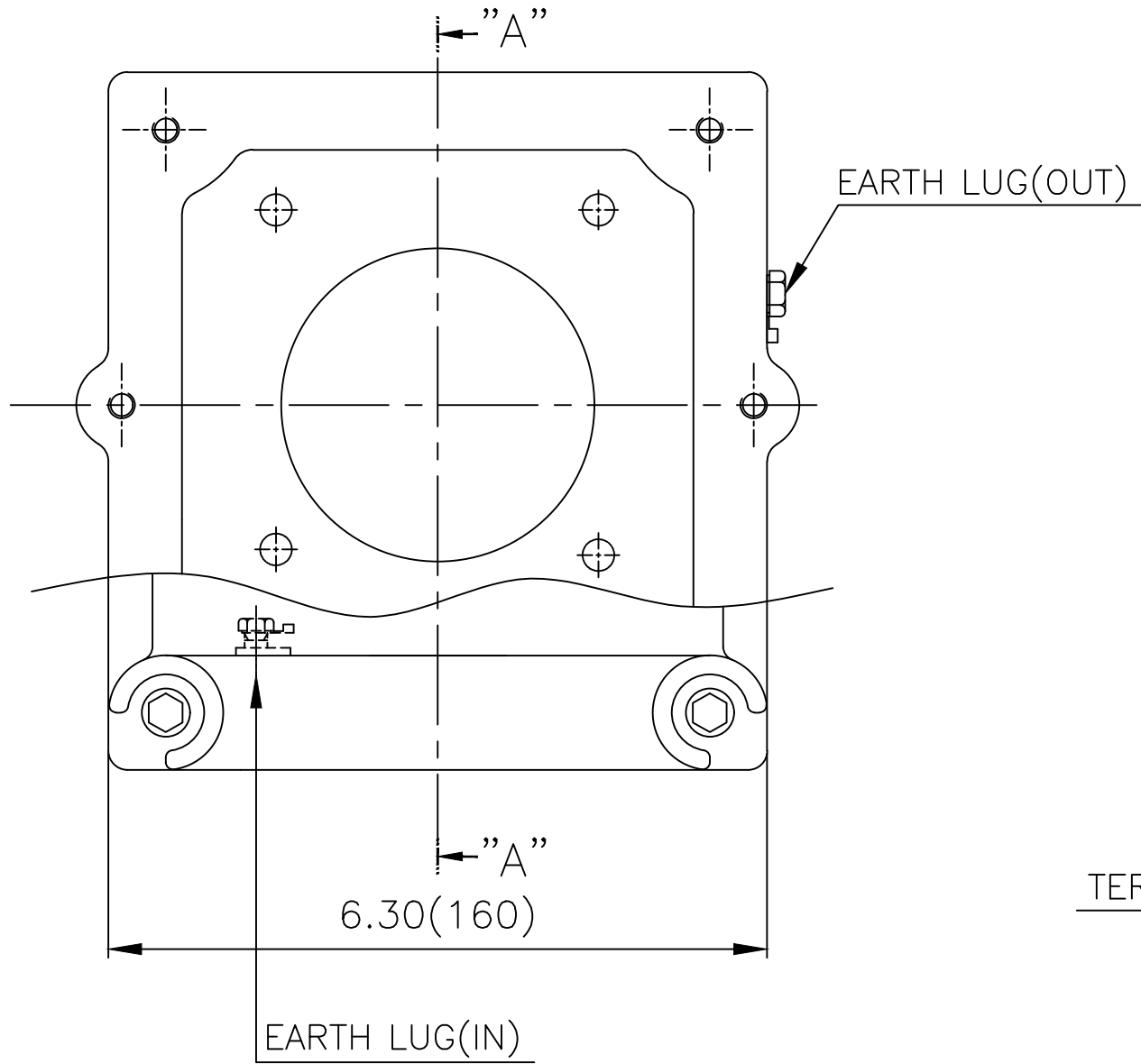
APPD BY	S.Y.KIM	UNIT	inch	SUBJECT	NEMA 286TSC	DWG SIZE	A4 (1:12)
CHKD BY	R.G.KIM	SCALE	1/10	TITLE	OUTLINE	REF. NO	Sheet No. of
CHKD BY		PROJEC'N	3rd Angle				
DSND BY	J.H.JEON	DATE	2021-04-15				



DWG NO	LM-U0286C4SL001	Revision No.	0
--------	-----------------	--------------	---



Cls. I Div. 1



▽	50S
▽▽	12.5S
▽▽▽	3.2S
▽▽▽▽	0.4S

REV	DATE	CONTENTS	REVD BY	CHKD BY	CHKD BY	APPD BY

일반가공공차		일반제관공차	
1-4	±0.1	6-30	±0.5
4-18	±0.2	30-120	±0.8
18-63	±0.3	120-315	±1.2
63-250	±0.5	315-1000	±2.0
250-	±0.8	1000-	±3.0

Q'TY	DESCRIPTION	MATERIAL	DIMENSION	WEIGHT	PART NO.	REMARK	NO.
APPD BY	S.Y.KIM	UNIT	inch(mm)	SUBJECT	NEMA FR. 250~280(CAST IRON)		DWG SIZE
CHKD BY	R.G.KIM	SCALE	1/1.5	TITLE	MAIN TERMINAL BOX ASS'Y		A3 (1:1.5)
CHKD BY		PROJEC'N	3rd Angle	REF. NO		Sheet No.	of
DSND BY	김은진	DATE	2023-11-08	DWG NO	3M-248637	Revision No.	0

