

Customer :  
Project Name :  
Project No. :  
Revision No. :

# SPECIFICATION for INDUCTION MOTOR



0		For Bidding			
No.	DATE	DESCRIPTION	PREPARED BY	CHECKED BY	APPROVED BY



# AC INDUCTION MOTOR DATA SHEET

## Explosion Proof type

Catalog No.	IXHHI75-36-365TS	Item No.	Rev. No.	[      ]
Project Name		Project No.	Quantity	sets

GENERAL SPECIFICATION			PERFORMANCE DATA			
Frame Size	365TS		Rated Output	55 kW      75 HP		
Type	XJP		Number of Poles	2		
Enclosure(Protection)	Totally Enclosed	/ IP55	Rotor Type	Squirrel Cage		
Method of Cooling	IC411(FC)		Starting Method*	D.O.L		
Rated Frequency	60 Hz		Rated Voltage	575 V	460 V	230 V
Number of Phases	3		Current	Full Load	63.9 A	79.8 A      159.7 A
Insulation Class	F			Locked-rotor**	680 %	680 %      680 %
Temp. Rise at full load (by resistance method)			Efficiency			
at 1.0 S.F	80 deg. C		50% Load		91.5 %	
Motor Location	<input type="checkbox"/> Indoor <input type="checkbox"/> Outdoor		75% Load		93.5 %	
Altitude	Less than 1,000 meter		100% Load		94.5 %	
Relative Humidity	Less than 80 %		Power Factor(p.u)			
Ambient Temp.	40 deg. C (Max.)		50% Load		0.765	
Duty Type	Continuous ( S1 )		75% Load		0.865	
Service Factor	1.15		100% Load		0.915	
Mounting	B3		Speed at Full Load	3570 r.p.m		
Bearing	Type	Anti-Friction	Torque			
	DE/N-DE	6213C3 / 6213C3	Full Load		108.5 lb.ft	
	Lubricant	Grease(Polyrex-EM)	Locked-rotor**		140 %	
External Thrust	Not applicable		Breakdown**		220 %	
Coupling Method	<input checked="" type="checkbox"/> Direct <input type="checkbox"/> V-belt		Moment of Inertia (J)			
Shaft Extension	Single		Load(Max.)		136.450 lb.ft2	
Terminal Box	Main	Cast Iron	Motor		11.040 lb.ft2	
	Aux.	No	Sound Pressure Level (No-load & mean value at 1m from motor)			
	Location	Refer to Outline Drawing			82 dB(A)	
Application			Vibration		0.0 mm/sec (peak)	
Area classification	Hazardous		Permissible number of consecutive starts		Cold 0 times Hot 0 times	
Type of Ex-Protection	Class I, Division 1		Paint	Munsell No.	4.0PB5.4/5.5(VL-451)	

### ACCESSORIES

\*. W.T.D.(Thermostat, 145°C) : 1EA/Ph.

### SPARE PARTS

### SUBMITTAL DRAWING

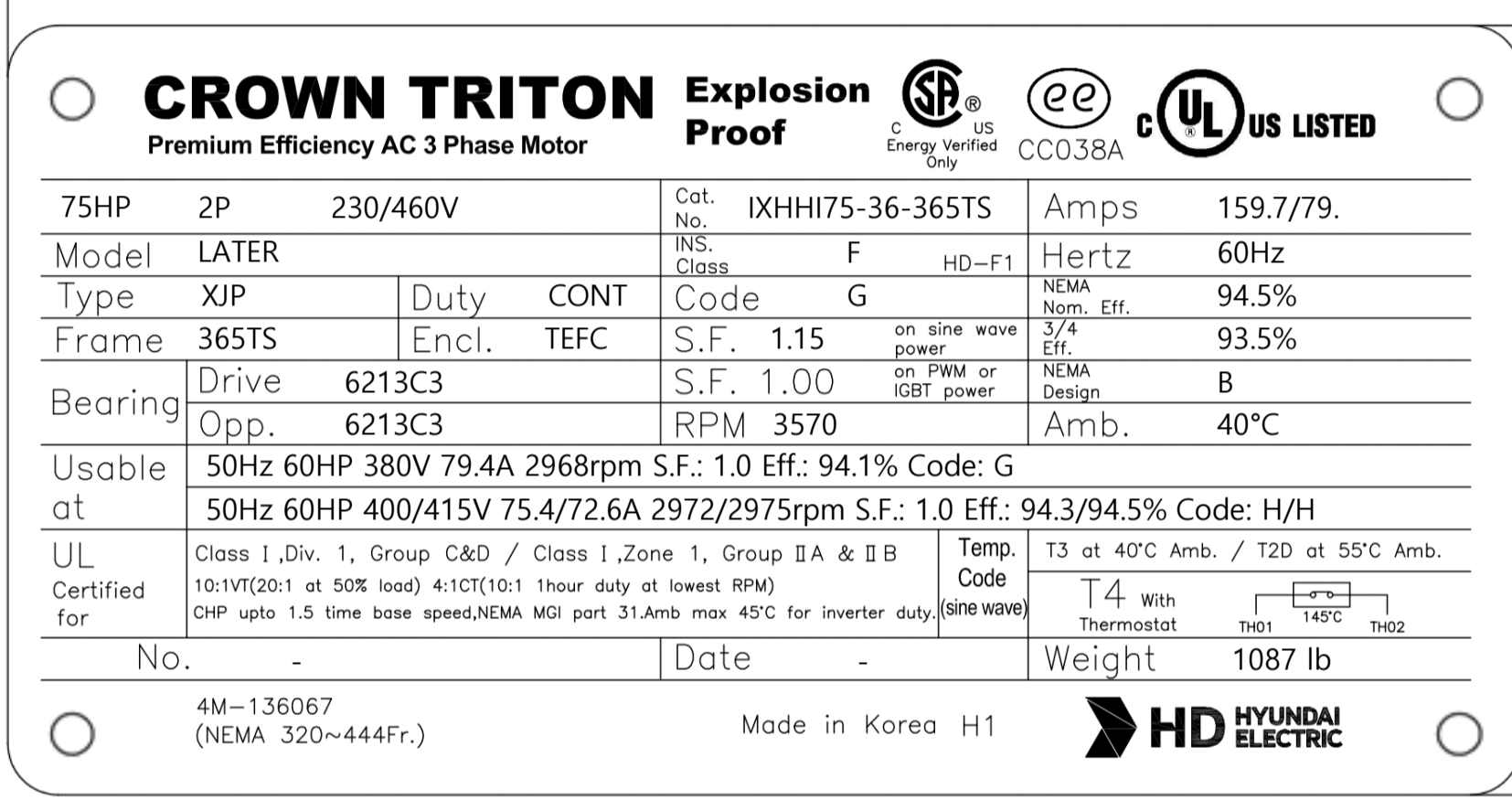

Outline Dimension Drawing		Motor Weight(Approx.)	
B3	LM-U0365B3SL001	1087 lb.	

### REMARK

1. Premium efficiency according to NEMA MG1
2. Inverter Duty @ 1.0 Service Factor & Ambient max 45°C
  - 4:1 CT (10:1 CT at 1hour Duty)
  - 10:1 VT (20:1 VT at 50% load)
  - CHP up to 1.5 times base speed, NEMA MG1 Part31
3. Temperature Code
  - T3 at 40°C Ambient / T2D at 55°C Ambient
  - T4 with Winding Temperature Detector

Date	DSND	CHKD	CHKD	APPD
2024-07-14	S.H. Lee	I.K. Kim	R.G. Kim	S.W. Kim

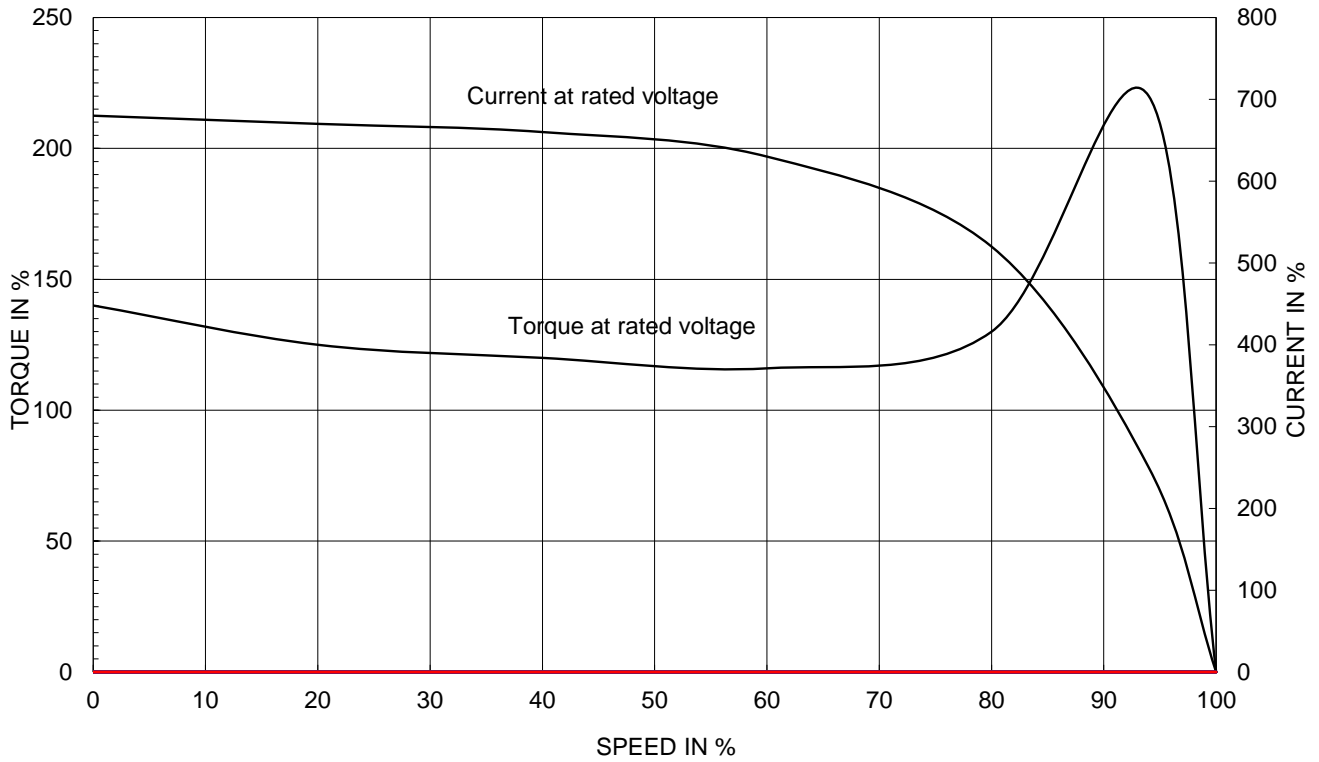
[Note] Others not mentioned in this data sheet shall be in accordance with maker standard.  
 Above technical data are only design values and shall be guaranteed with tolerance of applicable standard.  
 Inspection and performance test shall be done according to maker standard, if not mentioned.  
 \* In case of Inverter-Fed Motor, performance data is based on sine wave tests. It may be different from test data of Inverter combined motor.  
 \*\* Data is based on rated voltage & frequency and is expressed as a percentage of full-load value.

1		2		3		4	
REV	DATE	CONTENTS		REVD BY	CHKD BY	CHKD BY	APPD BY
<div style="display: flex; justify-content: space-between;"> <span>4.72</span> <span>2.36</span> </div> <div style="text-align: center;">  <p><b>CROWN TRITON</b> Explosion Proof Premium Efficiency AC 3 Phase Motor</p> <p>75HP 2P 230/460V Cat. No. IXHHI75-36-365TS Amps 159.7/79.</p> <p>Model LATER INS. Class F HD-F1 Hertz 60Hz</p> <p>Type XJP Duty CONT Code G NEMA Norm. Eff. 94.5%</p> <p>Frame 365TS Encl. TEFC S.F. 1.15 on sine wave power 3/4 Eff. 93.5%</p> <p>Bearing Drive 6213C3 S.F. 1.00 on PWM or IGBT power NEMA Design B</p> <p>Opp. 6213C3 RPM 3570 Amb. 40°C</p> <p>Usable at 50Hz 60HP 380V 79.4A 2968rpm S.F.: 1.0 Eff.: 94.1% Code: G</p> <p>50Hz 60HP 400/415V 75.4/72.6A 2972/2975rpm S.F.: 1.0 Eff.: 94.3/94.5% Code: H/H</p> <p>UL Certified for Class I, Div. 1, Group C&amp;D / Class I, Zone 1, Group IIA &amp; IIB</p> <p>10:1VT(20:1 at 50% load) 4:1CT(10:1 1hour duty at lowest RPM)</p> <p>CHP upto 1.5 time base speed, NEMA MGI part 31. Amb max 45°C for inverter duty.</p> <p>No. - Date - Weight 1087 lb</p> <p>4M-136067 (NEMA 320~444Fr.) Made in Korea H1</p>  </div>							

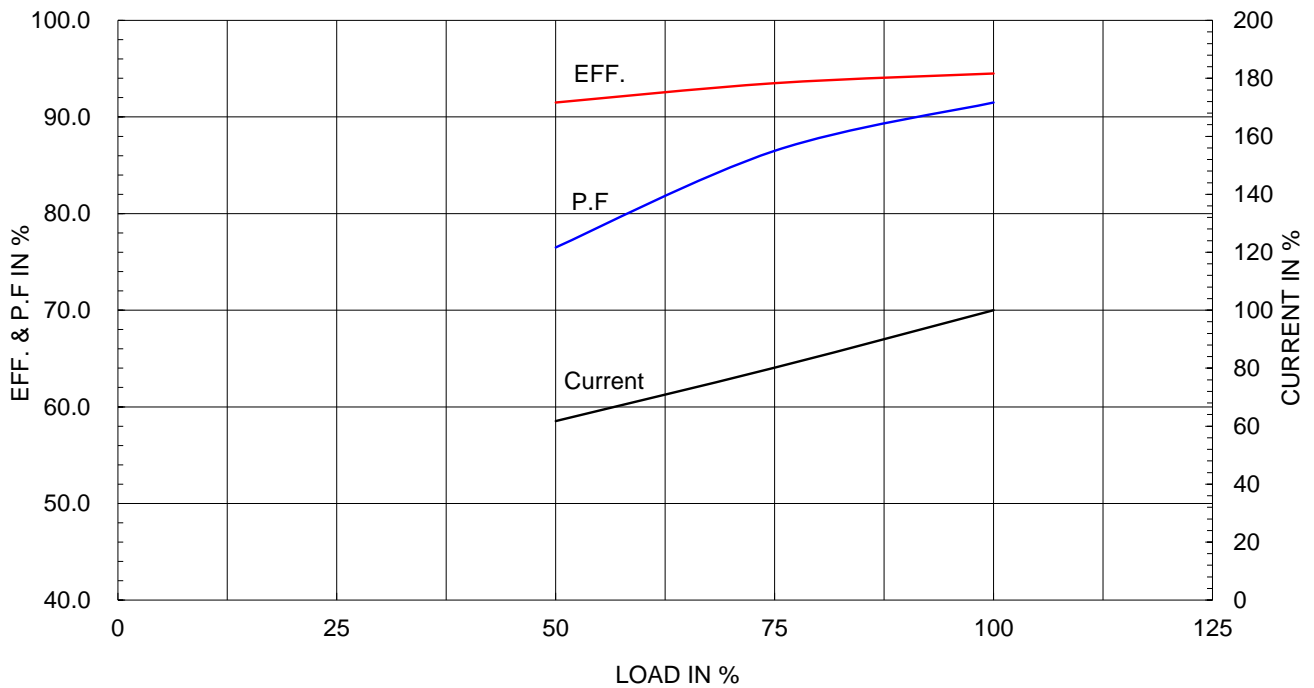
Type :	XJP
Full Load Torque :	108.5 lb.ft
Load moment of Inertia (J) :	136.450 lb.ft2
Motor moment of Inertia (J) :	11.040 lb.ft2

55kW 75HP	2 P	60 Hz
Speed at Full Load :		3570 RPM
Rated Voltage	575V	460V 230V
Full Load Current	63.9A	79.8A 159.7A

SPEED VS TORQUE & CURRENT CURVE



OUTPUT VS EFF., P.F & CURRENT CURVE

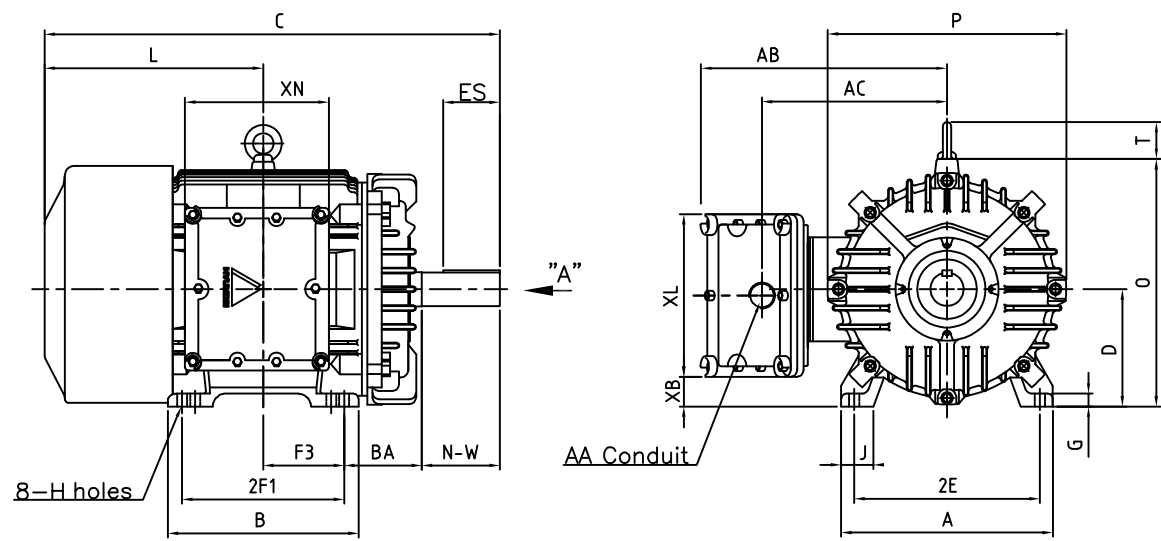


본 도면은 HD현대일렉트릭(주) 재산이며 허가없이 복사할 수 없음 (최급유위)

THIS DRAWING IS PROPRIETARY TO HYUNDAI ELECTRIC. NO PART OF THIS DRAWING MAY BE REPRODUCED WITHOUT THE PERMISSION OF HYUNDAI ELECTRIC.

▽	50S	REV	DATE	CONTENTS	REVD BY	CHKD BY	CHKD BY	APPD BY
▽▽	12.5S							
▽▽▽	3.2S							
▽▽▽▽	0.4S							

**Class I Division 1**



DIMENSIONS

MOUNTING									CONDUIT BOX						APPROX. WGT.(LB)
A	B	2E	2F1	2F2	F3	G	J	H	AA	AB	AC	XB	XL	XN	
15.98	14.41	14.00	12.25	-	6.122	0.98	2.44	0.66	3.00	18.89	14.37	2.24	12.28	10.86	2P: 1087 or 4P: 1153 or 6P: 1173

OVERALL							SHAFT					KEY	BEARING	
BA	C	D	L	O	P	T	U	N-W	KEYWAY			THK.	DRIVE END	OPP. DRIVE END
									R	ES	S			
5.88	34.01	9.00	16.51	18.70	18.03	2.80	1.875	3.75	1.591	2.03	0.500	0.500	6213C3	6213C3

NOTE

1. Dimension "D" tolerance : +0.00inch - 0.03inch (143T-365T) ; +0.000inch - 0.06inch (404T-449T)
2. Dimension "U" tolerance : +0.000inch - 0.005inch (143T-215T), +0.000inch - 0.001inch (254T-449T)
3. Dimension "R" tolerance : +0.000inch - 0.015inch

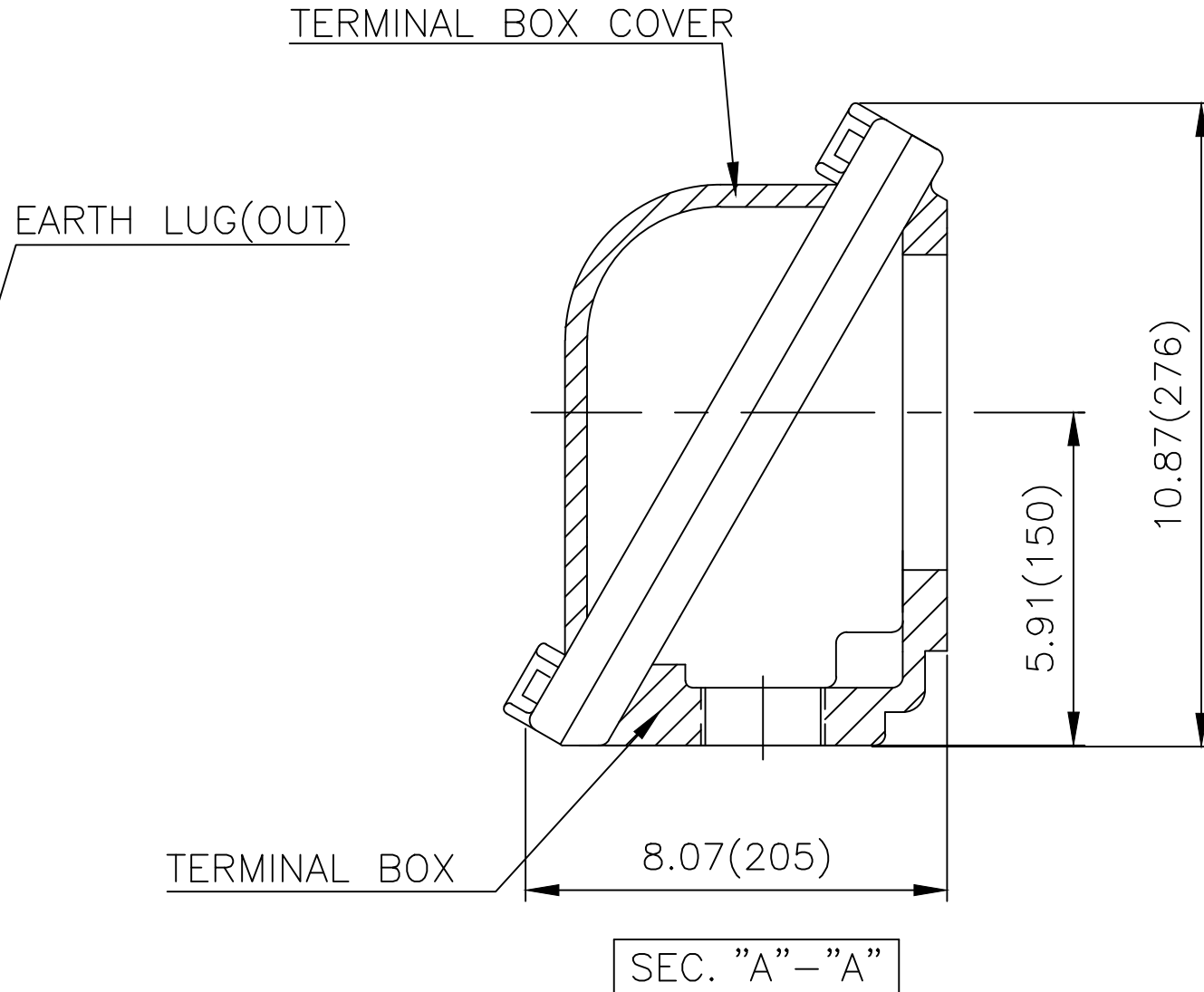
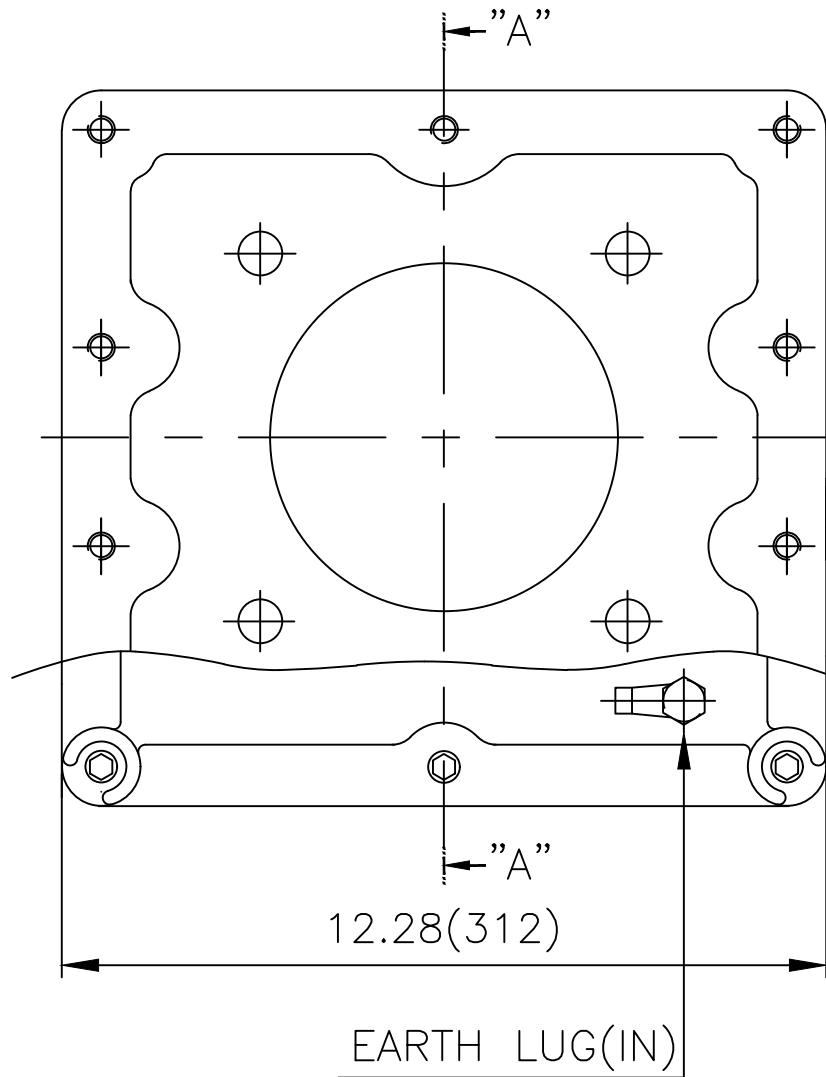
APPD BY	S.Y.KIM	UNIT	inch	SUBJECT	365TS	DWG SIZE	
CHKD BY	R.G.KIM	SCALE	1/15	TITLE	OUTLINE	A4 ( 1:15 )	
CHKD BY		PROJEC'N	3rd Angle				
DSND BY	J.H.JEON	DATE	2021-04-19				



REF. NO		Sheet No.	of
DWG NO	LM-U0365B3SL001	Revision No.	0



# Cls. I Div. 1



▽	50S
▽▽	12.5S
▽▽▽	3.2S
▽▽▽▽	0.4S

REV	DATE	CONTENTS	REVD BY	CHKD BY	CHKD BY	APPD BY

일반가공공차		일반제관공차	
1-4	±0.1	6-30	±0.5
4-18	±0.2	30-120	±0.8
18-63	±0.3	120-315	±1.2
63-250	±0.5	315-1000	±2.0
250-	±0.8	1000-	±3.0

Q'TY	DESCRIPTION	MATERIAL	DIMENSION	WEIGHT	PART NO.	REMARK	NO.
APPD BY	S.Y.KIM	UNIT	inch(mm)	SUBJECT	NEMA FR. 360(CAST IRON)	DWG SIZE	A3 ( 1:3 )
CHKD BY	R.G.KIM	SCALE	1/3	TITLE	MAIN TERMINAL BOX ASS'Y		
CHKD BY		PROJEC'N	3rd Angle	REF. NO		Sheet No.	of
DSND BY	김은진	DATE	2023-11-08	DWG NO	3M-248635	Revision No.	0

