

Customer :  
Project Name :  
Project No. :  
Revision No. :

# SPECIFICATION for INDUCTION MOTOR



0		For Bidding			
No.	DATE	DESCRIPTION	PREPARED BY	CHECKED BY	APPROVED BY



# AC INDUCTION MOTOR DATA SHEET

## Explosion Proof type

Catalog No.		IXHHI250-18-449T		Item No.		Rev. No.		[      ]							
Project Name				Project No.		Quantity		sets							
GENERAL SPECIFICATION					PERFORMANCE DATA										
Frame Size		449T			Rated Output		190 kW		250 HP						
Type		XJP			Number of Poles		4								
Enclosure(Protection)		Totally Enclosed / IP55			Rotor Type		Squirrel Cage								
Method of Cooling		IC411(FC)			Starting Method*		D.O.L								
Rated Frequency		60 Hz			Rated Voltage		575 V		460 V		230 V				
Number of Phases		3			Current		Full Load		225.4 A		281.7 A	563.4 A			
Insulation Class		F					Locked-rotor**		700 %		700 %		700 %		
Temp. Rise at full load (by resistance method)					Efficiency										
at 1.0 S.F		80 deg. C													
Motor Location		<input type="checkbox"/> Indoor <input type="checkbox"/> Outdoor			50% Load		93.2 %								
Altitude		Less than 1,000 meter			75% Load		95.2 %								
Relative Humidity		Less than 80 %			100% Load		96.2 %								
Ambient Temp.		40 deg. C (Max.)			Power Factor(p.u)										
Duty Type		Continuous ( S1 )													
Service Factor		1.15													
Mounting		B3			Speed at Full Load		1785 r.p.m								
Bearing		Type		Anti-Friction			Torque								
		DE/N-DE		NU320 / 6318C3											
		Lubricant		Grease(Polyrex-EM)											
External Thrust		Not applicable			Full Load		749.9 lb.ft								
Coupling Method		<input checked="" type="checkbox"/> Direct <input type="checkbox"/> V-belt			Locked-rotor**		140 %								
Shaft Extension		Single			Breakdown**		220 %								
Terminal Box		Main		Cast Iron			Moment of Inertia (J)								
		Aux.		No											
Location		Refer to Outline Drawing			Load(Max.)		3,318.708 lb.ft2								
Application					Motor		105.370 lb.ft2								
Area classification		Hazardous			Sound Pressure Level (No-load & mean value at 1m from motor)										
Type of Ex-Protection		Class I, Division 1													
Applicable Standard		NEMA MG1, CSA C390, UL674			Vibration		0.0 mm/sec (peak)								
ACCESSORIES					SUBMITTAL DRAWING										
* W.T.D.(Thermostat, 145°C) : 1EA/Ph.					Outline Dimension Drawing		Motor Weight(Approx.)								
					B3		LM-U0449B3TL001		3086 lb.						
SPARE PARTS					REMARK										
					1. Premium efficiency according to NEMA MG1 2. Inverter Duty @ 1.0 Service Factor & Ambient max 45°C -. 4:1 CT (10:1 CT at 1hour Duty) -. 10:1 VT (20:1 VT at 50% load) -. CHP up to 1.5 times base speed, NEMA MG1 Part31 3. Temperature Code -. T3 at 40°C Ambient / T2D at 55°C Ambient -. T4 with Winding Temperature Detector @ 1.0 Service Factor										
					Date		DSND		CHKD		CHKD		APPD		
					2024-07-14		S.H. Lee		I.K. Kim		R.G. Kim		S.W. Kim		


[Note] Others not mentioned in this data sheet shall be in accordance with maker standard.  
 Above technical data are only design values and shall be guaranteed with tolerance of applicable standard.  
 Inspection and performance test shall be done according to maker standard, if not mentioned.  
 \* In case of Inverter-Fed Motor, performance data is based on sine wave tests. It may be different from test data of Inverter combined motor.  
 \*\* Data is based on rated voltage & frequency and is expressed as a percentage of full-load value.


1	2	3	4
REV	DATE	CONTENTS	REVD BY


4.72

**CROWN TRITON**  
Premium Efficiency AC 3 Phase Motor

**Explosion Proof**








250HP	4P	460V	Cat. No.	IXHHI250-18-449T	Amps	281.7	
Model	LATER		INS. Class	F HD-F1	Hertz	60Hz	
Type	XJP	Duty	CONT	Code	G	NEMA Nom. Eff.	96.2%
Frame	449T	Encl.	TEFC	S.F.	1.15	on sine wave power	3/4 Eff. 95.2%
Bearing	Drive	NU320	S.F.	1.00	on PWM or IGBT power	NEMA Design	B
	Opp.	6318C3	RPM	1785		Amb.	40°C
Usable at	50Hz 250HP 380V 340.8A 1480rpm S.F.: 1.0 Eff.: 95.6% Code: F						
	50Hz 250HP 400/415V 325.3/316.1A 1482/1484rpm S.F.: 1.0 Eff.: 95.9/96% Code: G/G						
UL Certified for	Class I, Div. 1, Group C&D / Class I, Zone 1, Group II A & II B				Temp. Code (sine wave)	T3 at 40°C Amb. / T2D at 55°C Amb.	
	10:1VT(20:1 at 50% load) 4:1CT(10:1 1hour duty at lowest RPM) CHP upto 1.5 time base speed, NEMA MGI part 31. Amb max 45°C for inverter duty.					T4 (S.F.:1.0) With Thermostat TH01 145°C TH02	
No.	-		Date	-		Weight	3086.472

4M-136016  
(NEMA 445~449Fr.)

Made in Korea H1



2.36

APPD BY	S.Y.KIM	UNIT	INCH	SUBJECT	UL Class I, Division1 (IXHHI)	DWG SIZE
CHKD BY	I.K.KIM	SCALE	NONE			A4 ( 1:1 )
CHKD BY	R.G.KIM	PROJEC'N	3rd Angle	TITLE <b>NAMEPLATE DRAWING</b>		
DSND BY	S.H.LEE	DATE	2024.06.07			

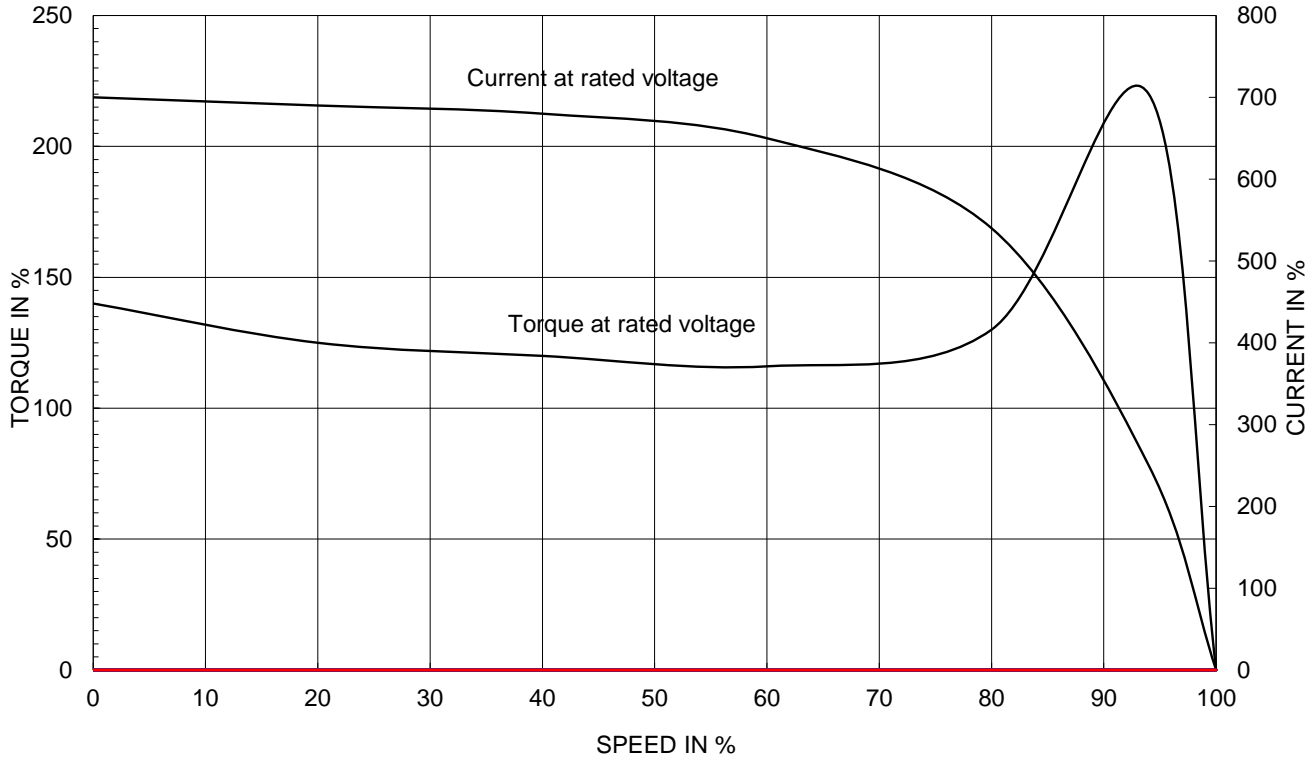


REF. NO	<b>4M-136016</b>	Sheet No.	of
DWG NO	<b>NP-IXHHI250-18-449T</b>	Revision No.	<b>0</b>

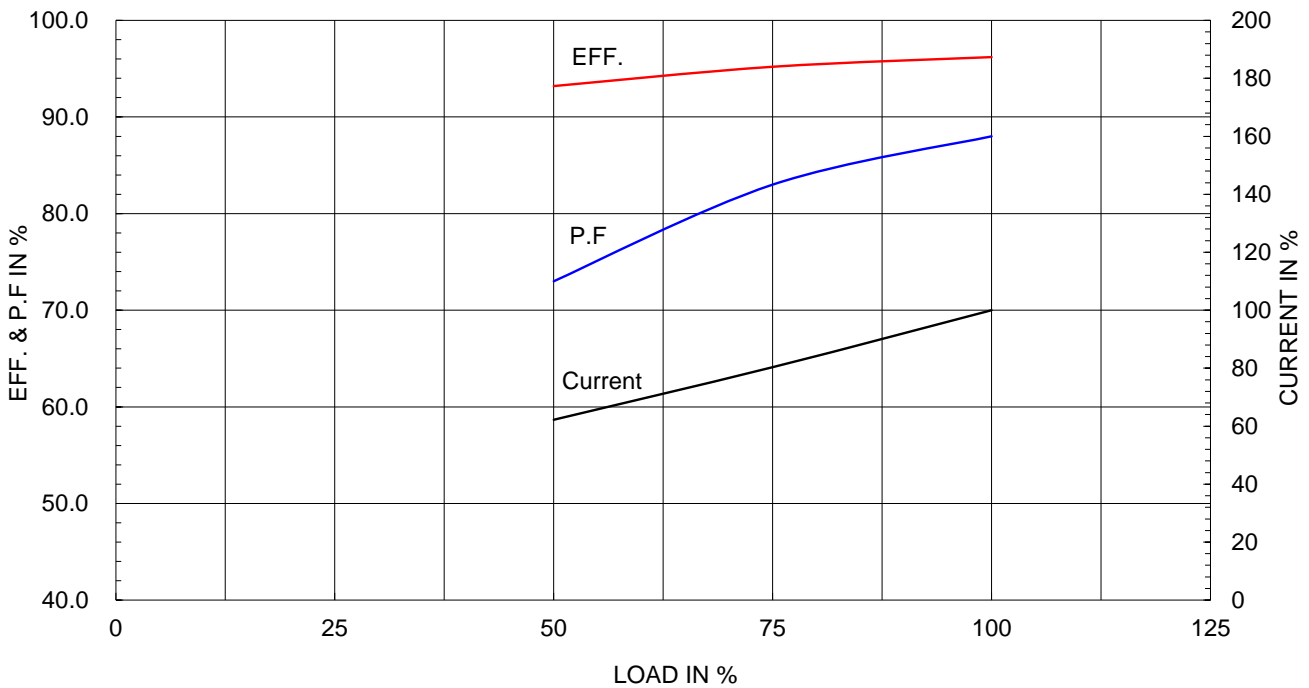
Type :	XJP
Full Load Torque :	749.9 lb.ft
Load moment of Inertia (J) :	3318.708 lb.ft2
Motor moment of Inertia (J) :	105.370 lb.ft2

190kW 250HP	4 P	60 Hz
Speed at Full Load :		1785 RPM
Rated Voltage	575V	460V 230V
Full Load Current	225.4A	281.7A 563.4A

SPEED VS TORQUE & CURRENT CURVE



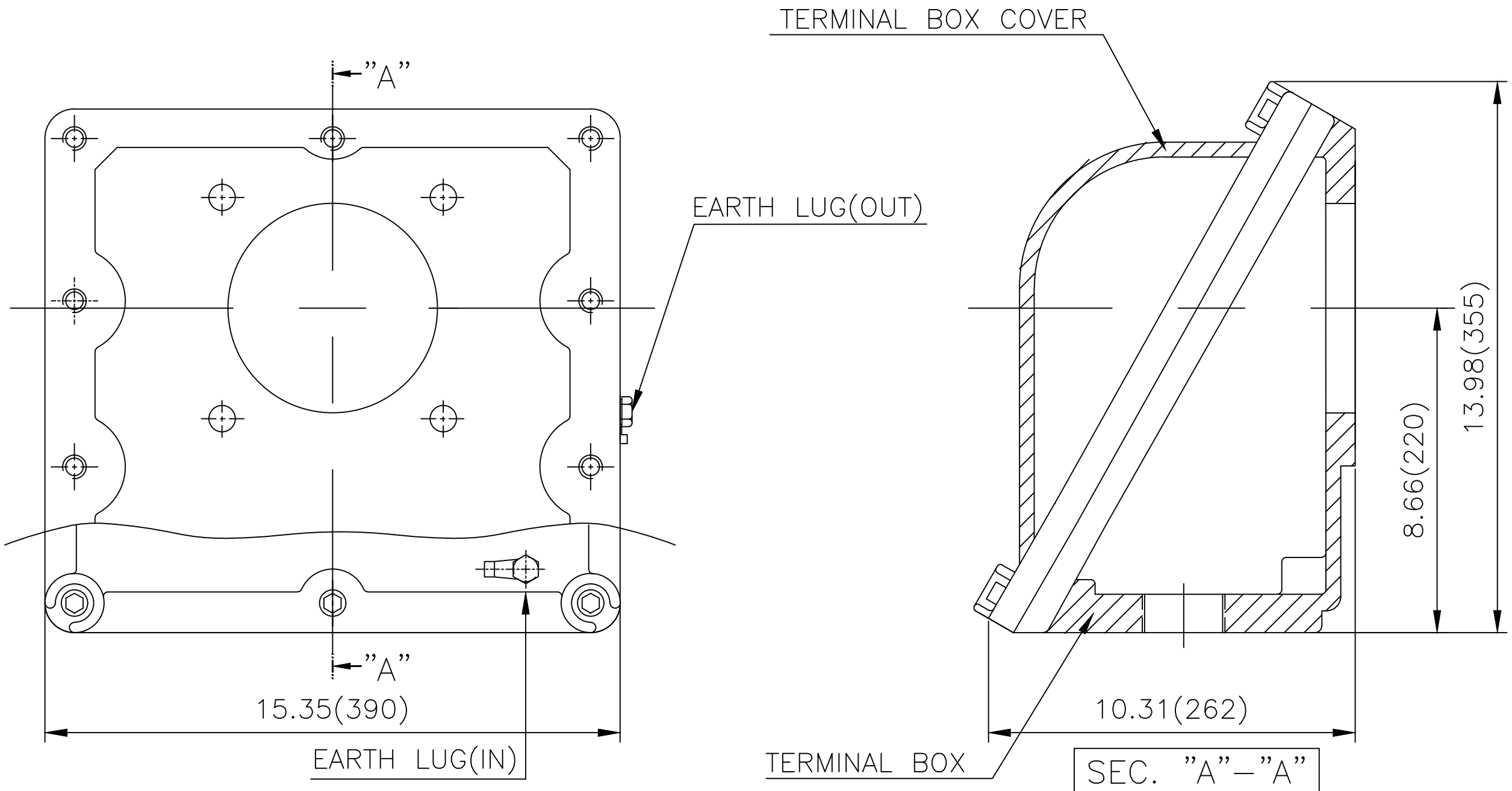
OUTPUT VS EFF., P.F & CURRENT CURVE







# Cls. I Div. 1



▽	50S
▽▽	12.5S
▽▽▽	3.2S
▽▽▽▽	0.4S

REV	DATE	CONTENTS	REVD BY	CHKD BY	CHKD BY	APPD BY

일반가공공차		일반제관공차	
1-4	±0.1	6-30	±0.5
4-18	±0.2	30-120	±0.8
18-63	±0.3	120-315	±1.2
63-250	±0.5	315-1000	±2.0
250-	±0.8	1000-	±3.0

Q'TY	DESCRIPTION	MATERIAL	DIMENSION	WEIGHT	PART NO.	REMARK	NO.
APPD BY	S.Y.KIM	UNIT	inch(mm)	SUBJECT	NEMA FR. 400~440(CAST IRON)	DWG SIZE	A3 ( 1:3 )
CHKD BY	R.G.KIM	SCALE	1/3	TITLE	MAIN TERMINAL BOX ASS'Y		
CHKD BY		PROJEC'N	3rd Angle	REF. NO		Sheet No.	of
DSND BY	김은진	DATE	2023-11-08	DWG NO	3M-248636	Revision No.	0

