

Customer :  
Project Name :  
Project No. :  
Revision No. :

# SPECIFICATION for INDUCTION MOTOR



0		For Bidding			
No.	DATE	DESCRIPTION	PREPARED BY	CHECKED BY	APPROVED BY

# AC INDUCTION MOTOR DATA SHEET

Catalog No.	HSDE400-18-L449TC-IBSH	Item No.	Rev. No. [     ]
Project Name		Project No.	Quantity                    sets

GENERAL SPECIFICATION		PERFORMANCE DATA			
Frame Size	L449TC	Rated Output	300 kW                    400 HP		
Type	PJP	Number of Poles	4		
Enclosure(Protection)	Totally Enclosed / IP55	Rotor Type	Squirrel Cage		
Method of Cooling	IC411(FC)	Starting Method*	D.O.L		
Rated Frequency	60 Hz	Rated Voltage	575 V	460 V	230 V
Number of Phases	3	Current	Full Load	355.8 A	444.8 A
Insulation Class	F		Locked-rotor**	710 %	710 %
Temp. Rise at full load (by resistance method)		Efficiency			
at 1.0 S.F	80 deg. C	50% Load		93.2 %	
Motor Location	<input type="checkbox"/> Indoor <input type="checkbox"/> Outdoor	75% Load		95.2 %	
Altitude	Less than 1,000 meter	100% Load		96.2 %	
Relative Humidity	Less than 80 %	Power Factor(p.u)			
Ambient Temp.	40 deg. C (Max.)	50% Load		0.730	
Duty Type	Continuous ( S1 )	75% Load		0.830	
Service Factor	1.15	100% Load		0.880	
Mounting	B35	Speed at Full Load	1785 r.p.m		
Bearing	Type	Anti-Friction			
	DE/N-DE	6322C3 / 6318C3-INS.			
	Lubricant	Grease(Polyrex-EM)			
External Thrust	Not applicable				
Coupling Method	<input checked="" type="checkbox"/> Direct <input type="checkbox"/> V-belt	Torque			
Shaft Extension	Single	Full Load		1,184.0 lb.ft	
Terminal Box	Main	Cast Iron			
	Aux.	Yes			
	Location	Refer to Outline Drawing			
Application		Moment of Inertia (J)			
Area classification	Hazardous	Load(Max.)		1,550.000 lb.ft2	
Type of Ex-Protection	Class I&II, Division 2	Motor		129.342 lb.ft2	
Applicable Standard	NEMA MG1, CSA C390	Sound Pressure Level (No-load & mean value at 1m from motor)			
		85 dB(A)			
		Vibration			
		3.8 mm/sec (peak)			
		Permissible number of consecutive starts		Cold    2 times	
				Hot     1 time	
		Paint	Munsell No.	4.0PB5.4/5.5(VL-451)	

### ACCESSORIES

\*. Space Heater : 1EA/Motor

### SPARE PARTS

### SUBMITTAL DRAWING














Outline Dimension Drawing		Motor Weight(Approx.)	
B35	LM-T044XC4UE001	3720 lb.	

### REMARK

1. Premium efficiency according to NEMA MG1
2. Inverter Duty @ 1.0 Service Factor & F Temperature rise
  - . 10:1 VT (20:1 VT at 50% load)
  - . 10:1 CT
  - . CHp up to 1.5 times base speed, NEMA MG1 Part31
3. NDE side : Insulated bearing
4. CSA Certification
  - . Class I, Division 2, Group A, B, C & D; Temp code : T3
  - . Class II, Division 2 Group F & G; Temp code : T3
5. Shaft material : AISI4140

Date	DSND	CHKD	CHKD	APPD
2024-07-13	S.H. Lee	I.K. Kim	R.G. Kim	S.W. Kim

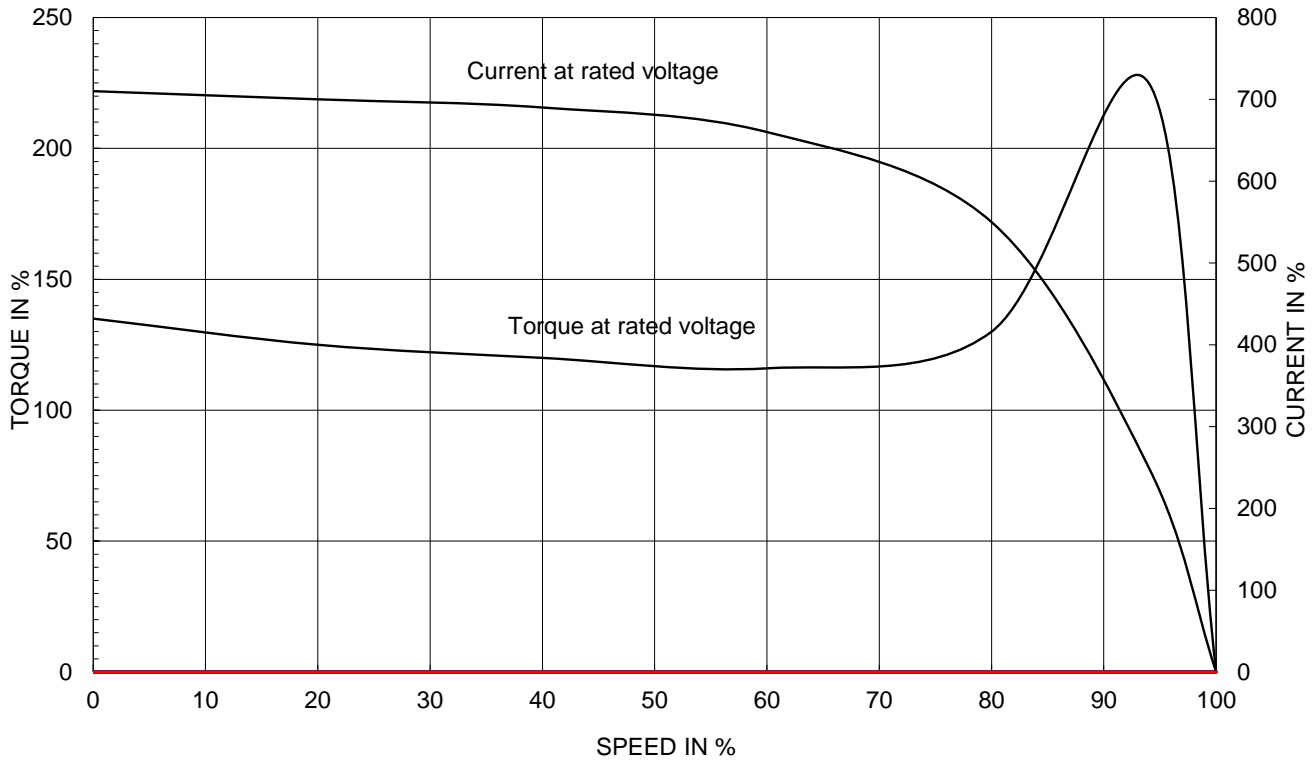
[Note] Others not mentioned in this data sheet shall be in accordance with maker standard.  
 Above technical data are only design values and shall be guaranteed with tolerance of applicable standard.  
 Inspection and performance test shall be done according to maker standard, if not mentioned.  
 \* In case of Inverter-Fed Motor, performance data is based on sine wave tests. It may be different from test data of Inverter combined motor.  
 \*\* Data is based on rated voltage & frequency and is expressed as a percentage of full-load value.

1		2		3		4																																																																																																																																																																															
REV	DATE	CONTENTS		REVD BY	CHKD BY	CHKD BY	APPD BY																																																																																																																																																																														
<p><b>4.72</b></p>																																																																																																																																																																																					
<table border="1"> <tr> <td colspan="4" style="text-align: center;"> <p><b>CROWN TRITON</b> Premium Efficiency AC 3 Phase Motor</p> </td> <td colspan="2" style="text-align: center;">  </td> <td colspan="2" style="text-align: center;">  </td> <td colspan="2" style="text-align: center;">  </td> <td colspan="2" style="text-align: center;">  </td> </tr> <tr> <td colspan="4">400HP 4P 460V</td> <td colspan="4">Cat. No. HSDE400-18-L449TC-IBSH</td> <td colspan="2"> </td> <td colspan="2"> </td> </tr> <tr> <td colspan="2">Model LATER</td> <td colspan="2">Duty CONT</td> <td colspan="2">INS. Class F</td> <td colspan="2">Amps 444.8</td> <td colspan="2"> </td> <td colspan="2"> </td> </tr> <tr> <td colspan="2">Type PJP</td> <td colspan="2">Encl. TEFC</td> <td colspan="2">Code G</td> <td colspan="2">Amb. 40°C</td> <td colspan="2">Hertz 60Hz</td> <td colspan="2"> </td> </tr> <tr> <td colspan="2">Frame L449TC</td> <td colspan="2">S.F. 1.15</td> <td colspan="2">RPM 1785</td> <td colspan="2">NEMA Nom. Eff. 96.2%</td> <td colspan="2"> </td> <td colspan="2"> </td> </tr> <tr> <td colspan="2" rowspan="2">Bearing</td> <td colspan="2">Drive 6322C3</td> <td colspan="2">S.F.1.00 (10:1 C.T., 20:1 V.T., NEMA-MG1 Part31)</td> <td colspan="2">3/4 Eff. 95.2%</td> <td colspan="2"> </td> <td colspan="2"> </td> </tr> <tr> <td colspan="2">Opp. 6318C3-INS.</td> <td colspan="2"> </td> <td colspan="2">NEMA Design B Torque</td> <td colspan="2"> </td> <td colspan="2"> </td> </tr> <tr> <td colspan="2">Usable at</td> <td colspan="2"> </td> <td colspan="2"> </td> <td colspan="2"> </td> <td colspan="2"> </td> <td colspan="2"> </td> </tr> <tr> <td colspan="2" rowspan="3">CSA Certified for</td> <td colspan="2">CLASS I, Div. 2, Gr. A, B, C &amp; D</td> <td colspan="2">CLASS II, Div. 2, Gr. F &amp; G</td> <td colspan="2" rowspan="3">Temp. Code (sine wave)</td> <td colspan="2">Frame L440FR - 500FR</td> <td colspan="2"> </td> </tr> <tr> <td colspan="2">CLASS I, Zone 2, Gr. IIA, IIB, &amp; IIC</td> <td colspan="2"> </td> <td colspan="2">Amb. 40°C</td> <td colspan="2">T3 (200°C)</td> <td colspan="2"> </td> </tr> <tr> <td colspan="2"> </td> <td colspan="2"> </td> <td colspan="2">Amb. 55°C</td> <td colspan="2">T3 (200°C)</td> <td colspan="2"> </td> </tr> <tr> <td colspan="2">No. -</td> <td colspan="2">Date -</td> <td colspan="2">Weight 3720 lb</td> <td colspan="2"> </td> <td colspan="2"> </td> <td colspan="2"> </td> </tr> <tr> <td colspan="2">4M-136053</td> <td colspan="2">Made in Korea H1</td> <td colspan="2"> </td> <td colspan="2"> </td> <td colspan="2"> </td> <td colspan="2"> </td> </tr> <tr> <td colspan="2">MARINE DUTY IEEE45</td> <td colspan="2"> </td> <td colspan="2"> </td> <td colspan="2"> </td> <td colspan="2"> </td> <td colspan="2"> </td> </tr> <tr> <td colspan="2"> </td> <td colspan="2"> </td> <td colspan="2"> </td> <td colspan="2"> </td> <td colspan="2"> </td> <td colspan="2"> </td> </tr> </table>								<p><b>CROWN TRITON</b> Premium Efficiency AC 3 Phase Motor</p>												400HP 4P 460V				Cat. No. HSDE400-18-L449TC-IBSH								Model LATER		Duty CONT		INS. Class F		Amps 444.8						Type PJP		Encl. TEFC		Code G		Amb. 40°C		Hertz 60Hz				Frame L449TC		S.F. 1.15		RPM 1785		NEMA Nom. Eff. 96.2%						Bearing		Drive 6322C3		S.F.1.00 (10:1 C.T., 20:1 V.T., NEMA-MG1 Part31)		3/4 Eff. 95.2%						Opp. 6318C3-INS.				NEMA Design B Torque						Usable at												CSA Certified for		CLASS I, Div. 2, Gr. A, B, C & D		CLASS II, Div. 2, Gr. F & G		Temp. Code (sine wave)		Frame L440FR - 500FR				CLASS I, Zone 2, Gr. IIA, IIB, & IIC				Amb. 40°C		T3 (200°C)								Amb. 55°C		T3 (200°C)				No. -		Date -		Weight 3720 lb								4M-136053		Made in Korea H1										MARINE DUTY IEEE45																							
<p><b>CROWN TRITON</b> Premium Efficiency AC 3 Phase Motor</p>																																																																																																																																																																																					
400HP 4P 460V				Cat. No. HSDE400-18-L449TC-IBSH																																																																																																																																																																																	
Model LATER		Duty CONT		INS. Class F		Amps 444.8																																																																																																																																																																															
Type PJP		Encl. TEFC		Code G		Amb. 40°C		Hertz 60Hz																																																																																																																																																																													
Frame L449TC		S.F. 1.15		RPM 1785		NEMA Nom. Eff. 96.2%																																																																																																																																																																															
Bearing		Drive 6322C3		S.F.1.00 (10:1 C.T., 20:1 V.T., NEMA-MG1 Part31)		3/4 Eff. 95.2%																																																																																																																																																																															
		Opp. 6318C3-INS.				NEMA Design B Torque																																																																																																																																																																															
Usable at																																																																																																																																																																																					
CSA Certified for		CLASS I, Div. 2, Gr. A, B, C & D		CLASS II, Div. 2, Gr. F & G		Temp. Code (sine wave)		Frame L440FR - 500FR																																																																																																																																																																													
		CLASS I, Zone 2, Gr. IIA, IIB, & IIC						Amb. 40°C		T3 (200°C)																																																																																																																																																																											
								Amb. 55°C		T3 (200°C)																																																																																																																																																																											
No. -		Date -		Weight 3720 lb																																																																																																																																																																																	
4M-136053		Made in Korea H1																																																																																																																																																																																			
MARINE DUTY IEEE45																																																																																																																																																																																					
<p><b>2.36</b></p>																																																																																																																																																																																					
APPD BY S.Y.KIM		UNIT INCH		SUBJECT CSA Class I, Division2 Severe Duty (HSDE ,L449-500)		DWG SIZE A4 ( 1:1 )																																																																																																																																																																															
CHKD BY I.K.KIM		SCALE NONE		TITLE																																																																																																																																																																																	
CHKD BY R.G.KIM		PROJEC'N 3rd Angle		<p><b>NAMEPLATE DRAWING</b></p>																																																																																																																																																																																	
DSND BY S.H.LEE		DATE 2024.06.07																																																																																																																																																																																			
		REF. NO		4M-136053		Sheet No. of																																																																																																																																																																															
		DWG NO		NP-HSDE400-18-L449TC-IBSH		Revision No. 0																																																																																																																																																																															
1		2		3		4																																																																																																																																																																															

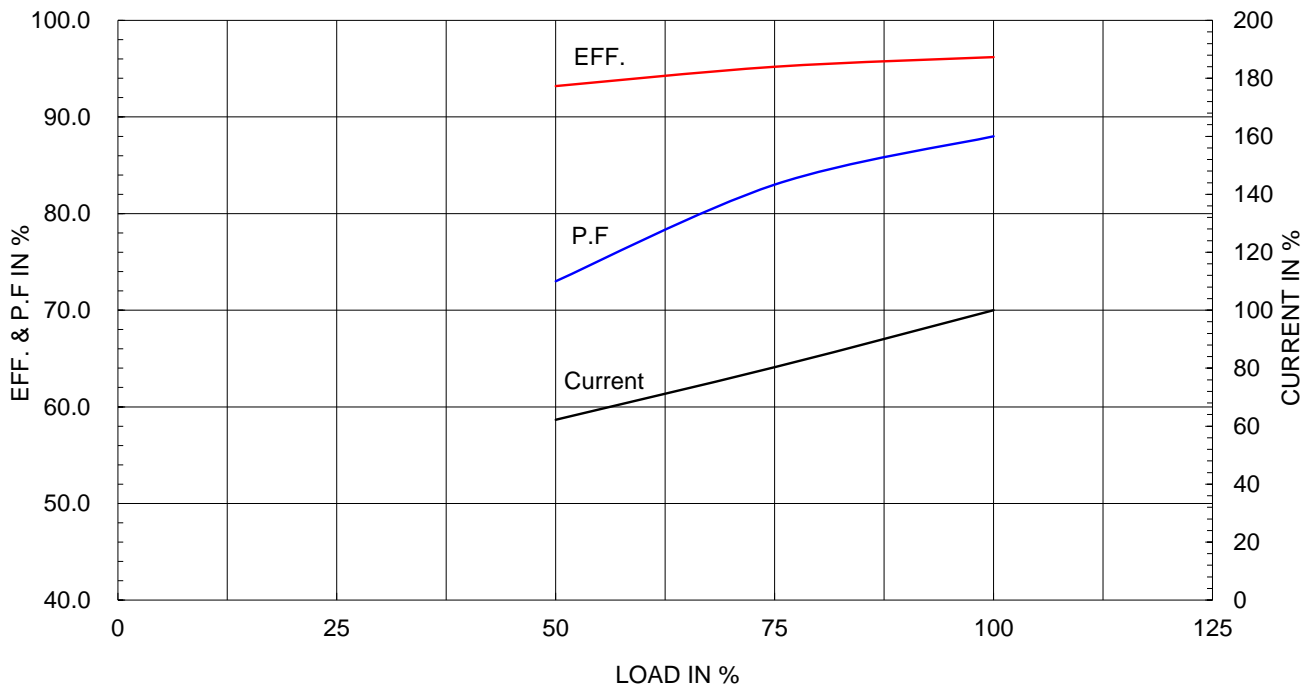
Type :	PJP
Full Load Torque :	1184.0 lb.ft
Load moment of Inertia (J) :	1550.000 lb.ft2
Motor moment of Inertia (J) :	129.342 lb.ft2

300kW	400HP	4 P	60 Hz
Speed at Full Load :			1785 RPM
Rated Voltage	575V	460V	230V
Full Load Current	355.8A	444.8A	889.6A

SPEED VS TORQUE & CURRENT CURVE



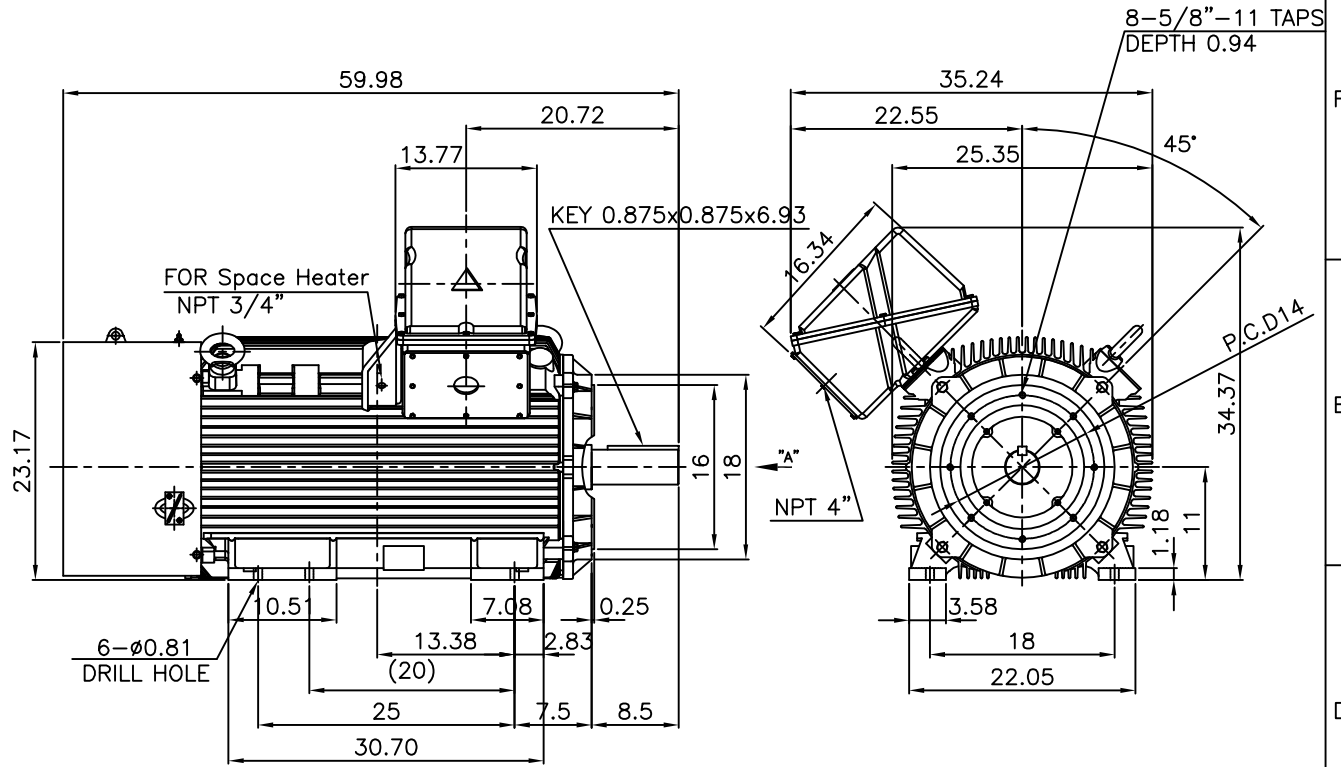
OUTPUT VS EFF., P.F & CURRENT CURVE



본 도면은 HD현대일렉트릭(주) 재산이며 허가없이 복사할 수 없음 (취급유의)

THIS DRAWING IS PROPRIETARY TO HYUNDAI ELECTRIC. NO PART OF THIS DRAWING MAYBE REPRODUCED WITHOUT THE PERMISSION OF HYUNDAI ELECTRIC.

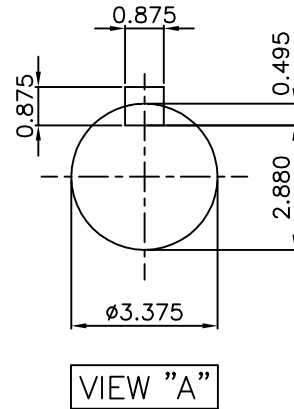
1	2	3	4
▽	50S	REV	DATE
▽▽	12.5S		
▽▽▽	3.2S		
▽▽▽▽	0.4S		
REVD BY	CHKD BY	CHKD BY	APPD BY



**NOTE**

1.TOLERANCE :

CENTER HEIGHT	11	+0.000	-0.060
RABBET DIAMETER	ø16	0	-0.005
SHAFT DIAMETER	ø3.375	+0.000	-0.001
KEYWAY WIDTH	0.875	+0.003	-0.000



APPD BY	S.Y.KIM	UNIT	INCH	SUBJECT	Fr.L449TC	DWG SIZE	A4 (1:18)
CHKD BY	O.J.KIM	SCALE	1/18	TITLE	NEMA STD SHAFT(4140 SHAFT)		
CHKD BY	R.G.KIM	PROJEC'N	3각법(3rd Angle)	<b>OUTLINE</b>			
DSND BY	H.K.LEE	DATE	2021-04-27				
				REF. NO		Sheet No.	of
				DWG NO	LM-T044XC4UE001	Revision No.	0

**Cls. I&II, Div. 2  
IEEE 841**

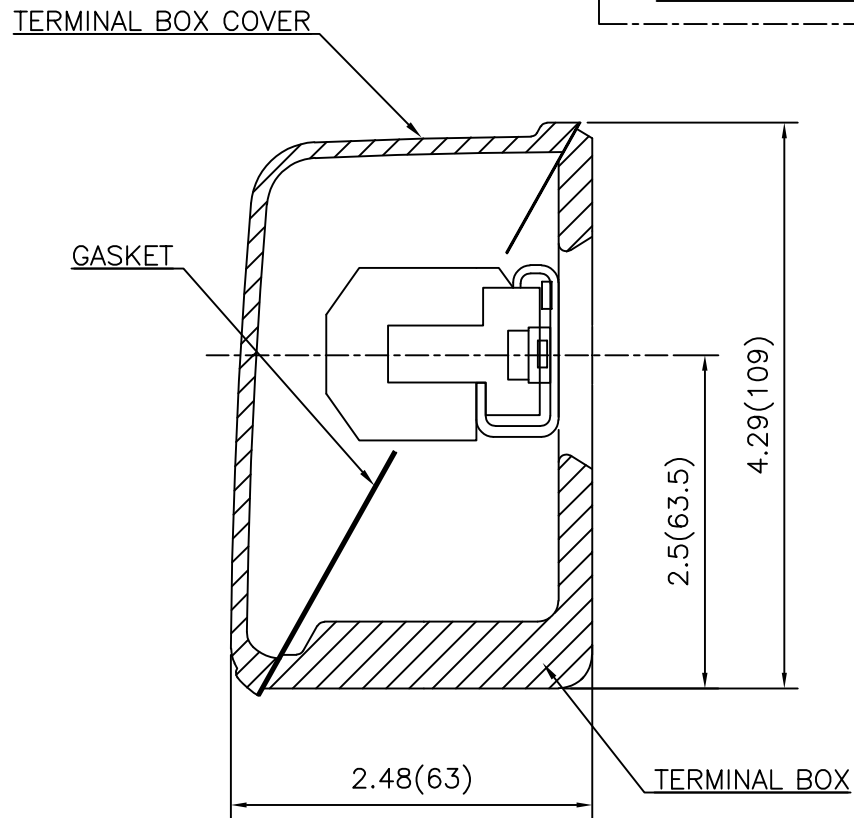


SEC. "A" - "A"

REV	DATE	CONTENTS	REVD BY	CHKD BY	CHKD BY	APPD BY

APPD BY	S.Y.KIM	UNIT	inch(mm)	SUBJECT	FR. L440 (CAST IRON)	DWG SIZE
CHKD BY		SCALE	1/3.5	TITLE	MAIN TERMINAL BOX ASS'Y	A3 (1:3.5)
CHKD BY	R.G.KIM	PROJEC'N	3rd Angle			
DSND BY	최승희	DATE	2023-10-19			
				REF. NO		Sheet No. of
				DWG NO	3M-248452	Revision No. 0

**Cls. I&II, Div. 2  
IEEE 841**



REV	DATE	CONTENTS	REVD BY	CHKD BY	CHKD BY	APPD BY

APPD BY	S.Y.KIM	UNIT	inch(mm)	SUBJECT	FR.180 (CAST IRON)	DWG SIZE
CHKD BY		SCALE	1/1	TITLE	SUB. TERMINAL BOX ASS'Y	
CHKD BY	R.G.KIM	PROJEC'N	3rd Angle	REF. NO		Sheet No. of
DSND BY	배승희	DATE	2024-01-18	DWG NO	3M-165277	Revision No. 0

