

Customer :  
 Project Name :  
 Project No. :  
 Revision No. :

# SPECIFICATION for INDUCTION MOTOR



0		For Bidding			
No.	DATE	DESCRIPTION	PREPARED BY	CHECKED BY	APPROVED BY



1	2	3	4
REV	DATE	CONTENTS	REVD BY   CHKD BY   CHKD BY   APPD BY

4.72



**CROWN TRITON**  
Premium Efficiency AC 3 Phase Motor





600HP	6P	460V	Cat. No.	IEEE600-12-5812-IBBRSRSH-F		
Model	LATER		INS. Class	F	Amps	701.9
Type	HNE6	Duty	CONT	Code	G	Amb. 40°C
Frame	5812	Encl.	TEFC	S.F.	1.15	RPM 1185
Bearing	Drive	NU324	S.F.1.00 (2:1 C.T., 10:1 V.T., NEMA-MG1 Part31)		NEMA Norm. Eff.	95.8%
	Opp.	6322C3-INS.			3/4 Eff.	94.8%
Usable at	50Hz 475HP 380V 678.33A 985rpm S.F.: 1.0 Eff.: 95.8% Code: H					
	50Hz 475HP 400/415V 660.32/644.41A 986/987rpm S.F.: 1.0 Eff.: 95.8/95.8% Code: J/J					
CSA Certified for	CLASS I, Div. 2, Gr. A, B, C & D			Temp. Code (sine wave)	Frame	580FR
					Maximum Amb. 50°C	T3A (180°C)
No.	-		Date	-		Weight 6019 lb

IEEE Std 841-2021

4M-136445      Made in Korea H1      

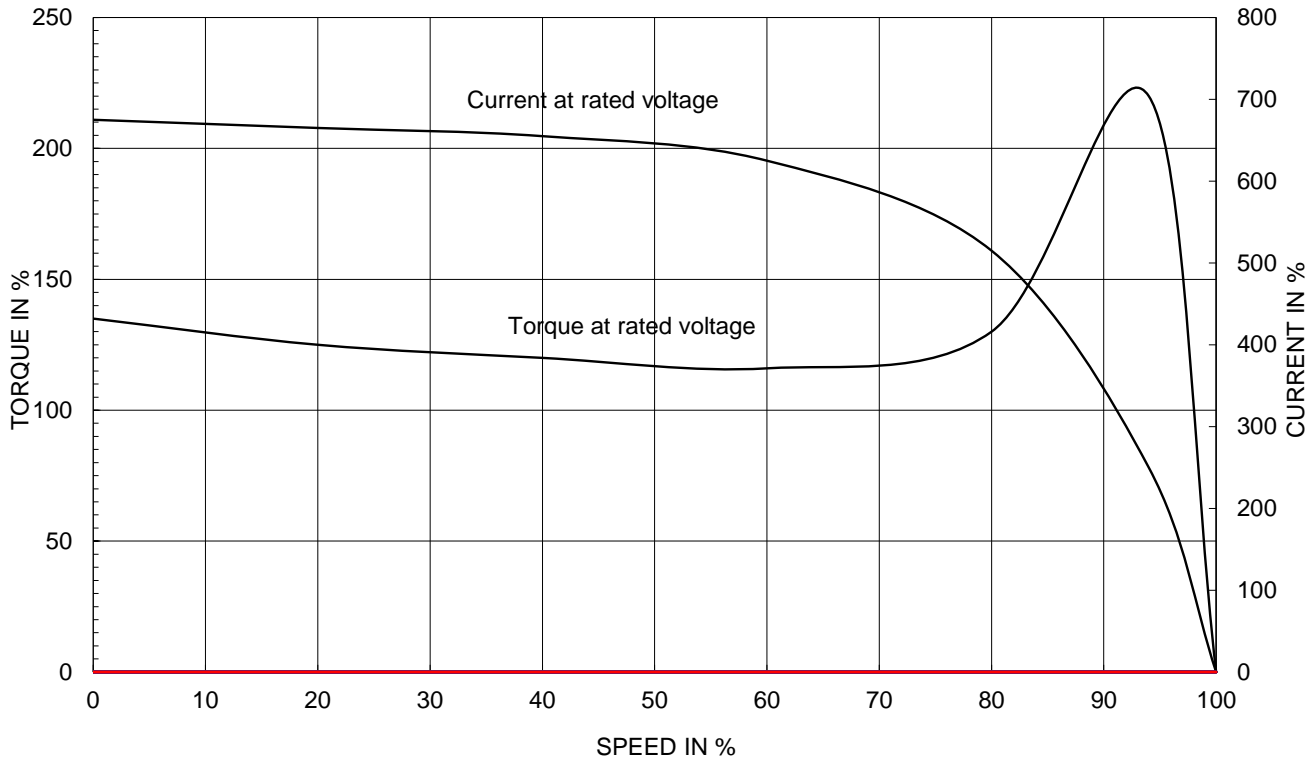
2.36

APPD BY	S.Y.KIM	UNIT	INCH	SUBJECT	CSA Class I, Division2 IEEE841 (XL)	DWG SIZE
CHKD BY	I.K.KIM	SCALE	NONE			A4 ( 1:1 )
CHKD BY	R.G.KIM	PROJEC'N	3rd Angle	NAMEPLATE DRAWING		
DSND BY	S.H.LEE	DATE	2024.06.07			
				REF. NO	4M-136445	Sheet No. of
				DWG NO	NP-IEEE600-12-5812-IBBRSRSH-F	Revision No. 0

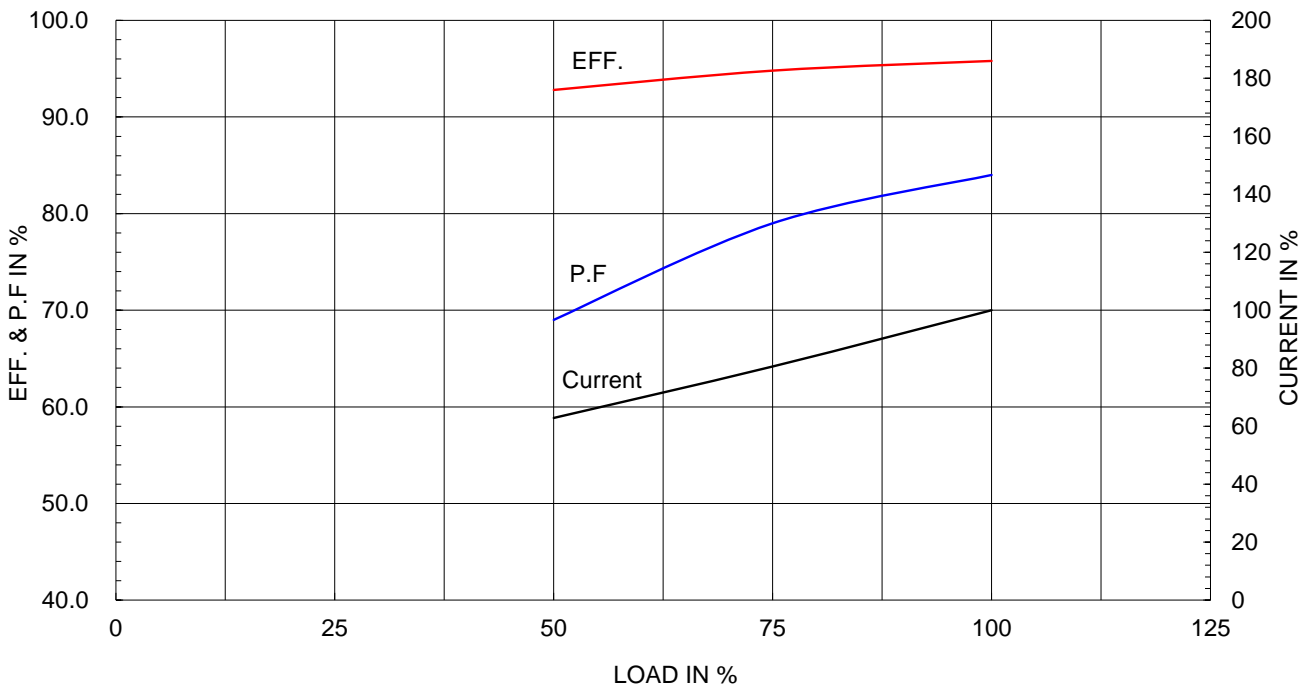
Type :	HNE6
Full Load Torque :	2675.3 lb.ft
Load moment of Inertia (J) :	6246.520 lb.ft <sup>2</sup>
Motor moment of Inertia (J) :	413.890 lb.ft <sup>2</sup>

450kW 600HP	6 P	60 Hz
Speed at Full Load :		1185 RPM
Rated Voltage	575V	460V 230V
Full Load Current	561.5A	701.9A 1403.7A

SPEED VS TORQUE & CURRENT CURVE



OUTPUT VS EFF., P.F & CURRENT CURVE

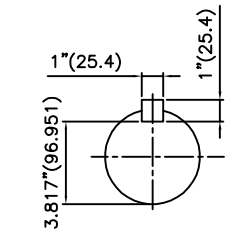
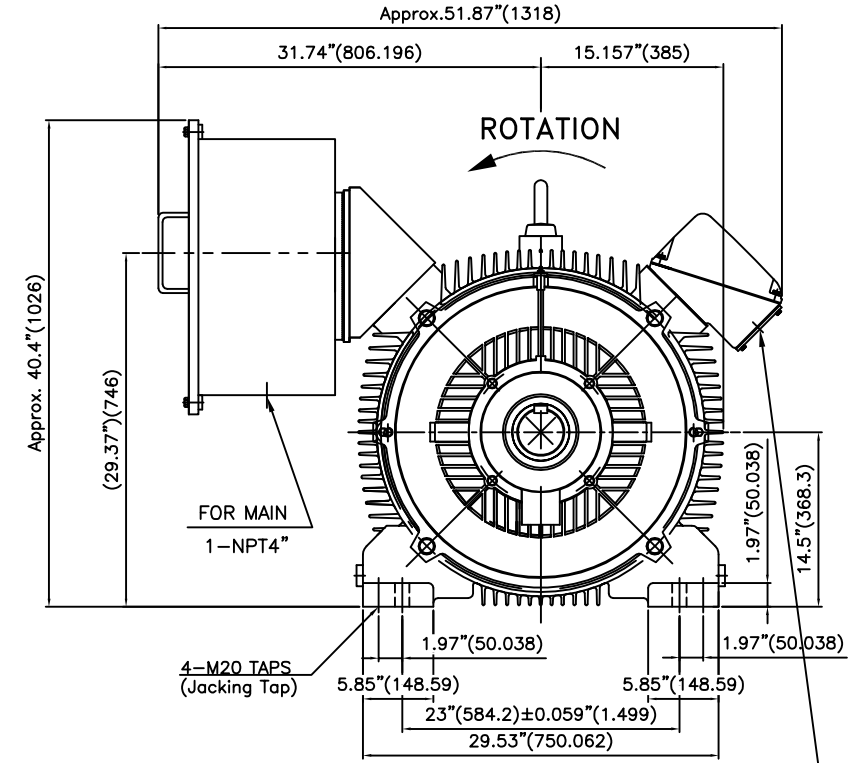
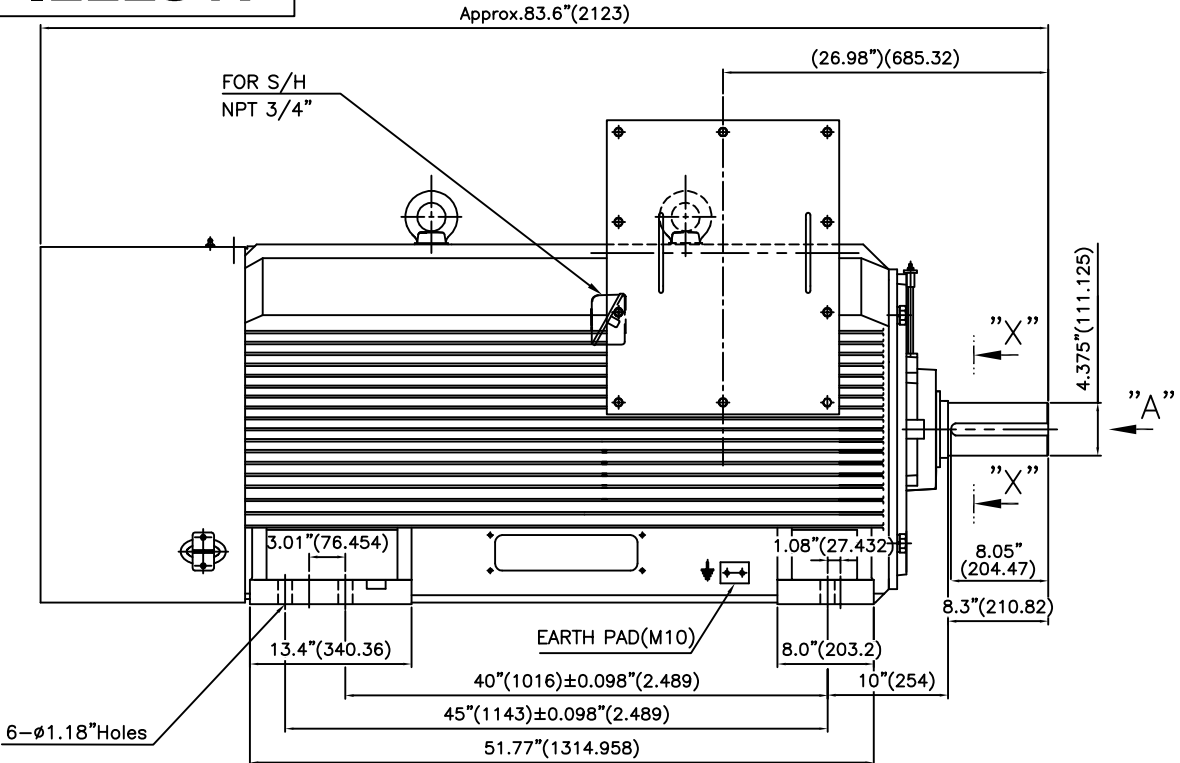


THIS DRAWING IS PROPRIETARY TO HYUNDAI ELECTRIC. NO PART OF THIS DRAWING MAYBE REPRODUCED WITHOUT THE PERMISSION OF HYUNDAI ELECTRIC.

HD HYUNDAI ELECTRIC

본 도면은 HD전대일렉트릭(주) 재산이며 허가없이 복사할 수 없음 (취급주의)

# IEEE841



VIEW "A"

### TECHNICAL INFORMATION

#### 1) BEARING & LUBRICANT LIST

BEARING	Drive End	Non-Drive End
Bearing Type	6324C3	6322C3
Lubricant Type	GREASE	GREASE
Grease Type	Shell(Gadus S2 V100 2)	Shell(Gadus S2 V100 2)
Initial Charge Quantity	434 g	334 g
Mark-Up	Quantity	130 g
	Interval	6 MONTHS
	6 MONTHS	6 MONTHS

#### 2) TOLERANCE :

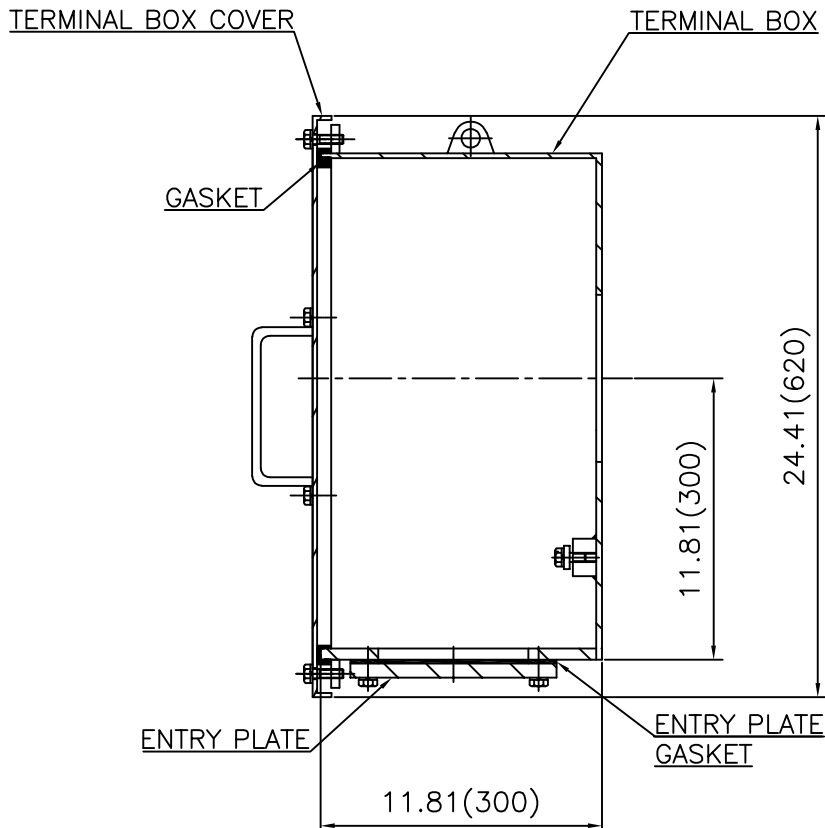
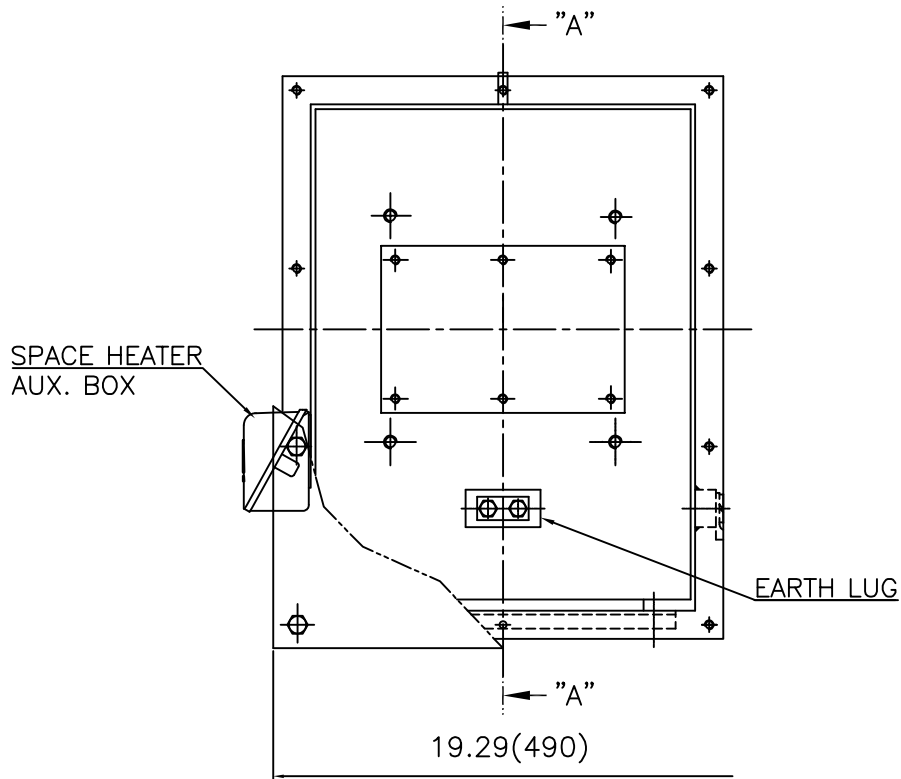
CENTER HEIGHT	14.5	+0.000	-0.060
SHAFT DIAMETER	∅4.375	+0.000	-0.001
KEYWAY WIDTH	1	+0.003	-0.000

Q'TY	DESCRIPTION	MATERIAL	DIMENSION	WEIGHT	PART NO.	REMARK	NO.
APPD BY	S.K.HAN	UNIT	INCH(MM)	SUBJECT	Fr.5812-4~20P		DWG SIZE
CHKD BY	S.Y.KIM	SCALE	1/12	TITLE	OUTLINE		A3 (1:12)
CHKD BY		PROJEC'N	3각법 (3rd Angle)	REF. NO		Sheet No.	of
DSND BY	J.H.LEE	DATE	2016.05.23	DWG NO	LM-I5812B3P7001	Revision No.	0



REV	DATE	CONTENTS	REVD BY	CHKD BY	CHKD BY	APPD BY
1						
2						
3						
4						

**Cls. I&II, Div. 2  
IEEE 841**



SEC. "A" - "A"

REV	DATE	CONTENTS	REVD BY	CHKD BY	CHKD BY	APPD BY
1						
2						
3						
4						

APPD BY	S.Y.KIM	UNIT	inch(mm)	SUBJECT	FR.580 (STEEL)	DWG SIZE	A3 (1:6)
CHKD BY		SCALE	1/6	TITLE	MAIN TERMINAL BOX ASS'Y		
CHKD BY	R.G.KIM	PROJEC'N	3rd Angle	REF. NO		Sheet No.	of
DSND BY	박승희	DATE	2023-10-25	DWG NO	3M-248512	Revision No.	0



# Cls. I&II, Div. 2 IEEE 841

본 도면은 HD현대일렉트릭(주) 재산이며  
허가없이 복사할 수 없음 (취급주의)

THIS DRAWING IS PROPRIETARY TO HYUNDAI ELECTRIC. NO PART OF THIS DRAWING  
MAY BE REPRODUCED WITHOUT THE PERMISSION OF HYUNDAI ELECTRIC.



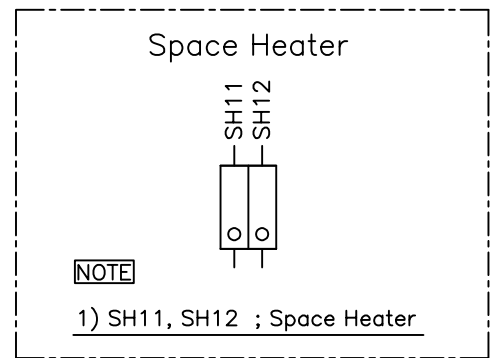
REV	DATE	CONTENTS	REVD BY	CHKD BY	CHKD BY	APPD BY

APPD BY	S.Y.KIM	UNIT	inch(mm)	SUBJECT	FR.360 (CAST IRON)	DWG SIZE	A3 (1:2.2)
CHKD BY		SCALE	1/1	TITLE	AUX. TERMINAL BOX ASS'Y	REF. NO	Sheet No. of
CHKD BY	R.G.KIM	PROJEC'N	3rd Angle	DWG NO		3M-165277	Revision No.
DSND BY	배승희	DATE	2024-01-18				

**Cls. I&II, Div. 2  
IEEE 841**



SEC. "A" - "A"



REV	DATE	CONTENTS	REVD BY	CHKD BY	CHKD BY	APPD BY

APPD BY	S.Y.KIM	UNIT	inch(mm)	SUBJECT	FR.180 (CAST IRON)	DWG SIZE
CHKD BY		SCALE	1/1	TITLE	SUB. TERMINAL BOX ASS'Y	A3 (1:1.1)
CHKD BY	R.G.KIM	PROJEC'N	3rd Angle			
DSND BY	배승희	DATE	2024-01-18			
				REF. NO		Sheet No. of
				DWG NO	3M-165278	Revision No. 0