

Customer :  
Project Name :  
Project No. :  
Revision No. :

# SPECIFICATION for INDUCTION MOTOR



0		For Bidding			
No.	DATE	DESCRIPTION	PREPARED BY	CHECKED BY	APPROVED BY



1	2	3	4
REV	DATE	CONTENTS	REVD BY

4.72

**CROWN TRITON G2**  
Premium Efficiency AC 3 Phase Motor

40HP	2P	230/460V	Cat. No.	HES40-36-324TSC			
Model	HLS324PR13		INS. Class	F	HD-F1	Amps	89.1/44.5
Type	HLS	Duty	CONT	Code	J	Amb.	40°C
Frame	324TSC	Encl.	TEFC	S.F.	1.15	RPM	3560
Bearing	Drive	6212ZC3		S.F.1.25 (When 100HP or less, Temp Rise F & Non-Hazardous)		3/4 Eff.	91.4%
	Opp.	6212ZC3		S.F.1.00 (10:1 C.T., 20:1 V.T., NEMA-MG1 Part31)		NEMA Design	B Torque
Usable at	50Hz 30HP 380V 44.2A 2965rpm S.F.: 1.0 Eff.: 91.3% Code: K						
	50Hz 30HP 400/415V 42.5/41.4A 2970/2970rpm S.F.: 1.0 Eff.: 91.3/91.3% Code: L/L						
CSA Certified for	Model	LATER		Type	PJP	Temp. Code	
	CLASS I, Div. 2, Gr. A, B, C & D		CLASS II, Div. 2 Gr. E, F & G		(sine wave)	Amb. 40°C	T3C (160°C)
	CLASS I, Zone 2, Gr. IIA, IIB, & IIC		(Gr. E: Up to 320FR)			Amb. 55°C	T3A (180°C)
No.	-		Date	-		Weight	570 lb

4M-136024  
**MARINE DUTY IEEE45**

Made in Vietnam H4  
Designed By HYUNDAI, Korea

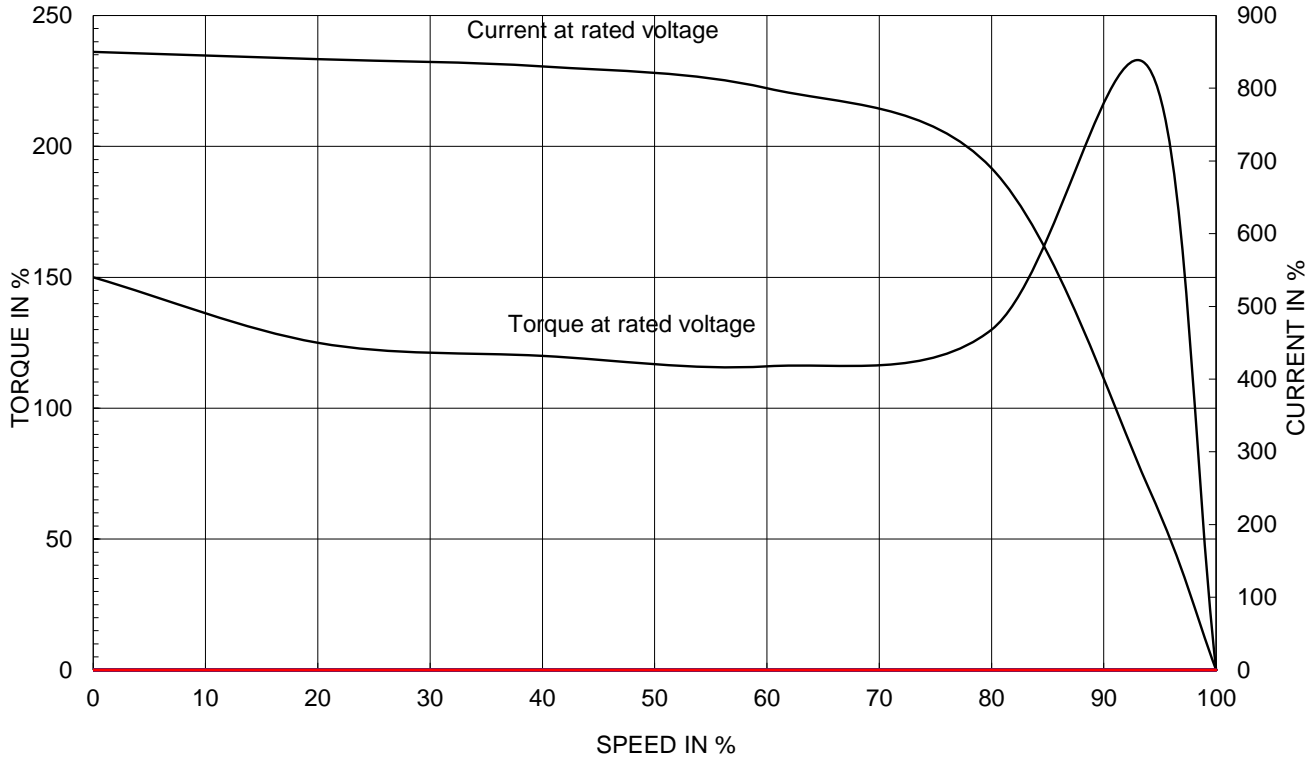
2.36

APPD BY	S.Y.KIM	UNIT	INCH	SUBJECT	CSA Class I, Division2 Severe Duty (HES, 254-326)	DWG SIZE	A4 ( 1:1 )
CHKD BY	I.K.KIM	SCALE	NONE				
CHKD BY	R.G.KIM	PROJEC'N	3rd Angle	TITLE <b>NAMEPLATE DRAWING</b>			
DSND BY	S.H.LEE	DATE	2024.06.07				
				REF. NO	<b>4M-136024</b>	Sheet No. of	
				DWG NO	<b>NP-HES40-36-324TSC</b>	Revision No. <b>0</b>	

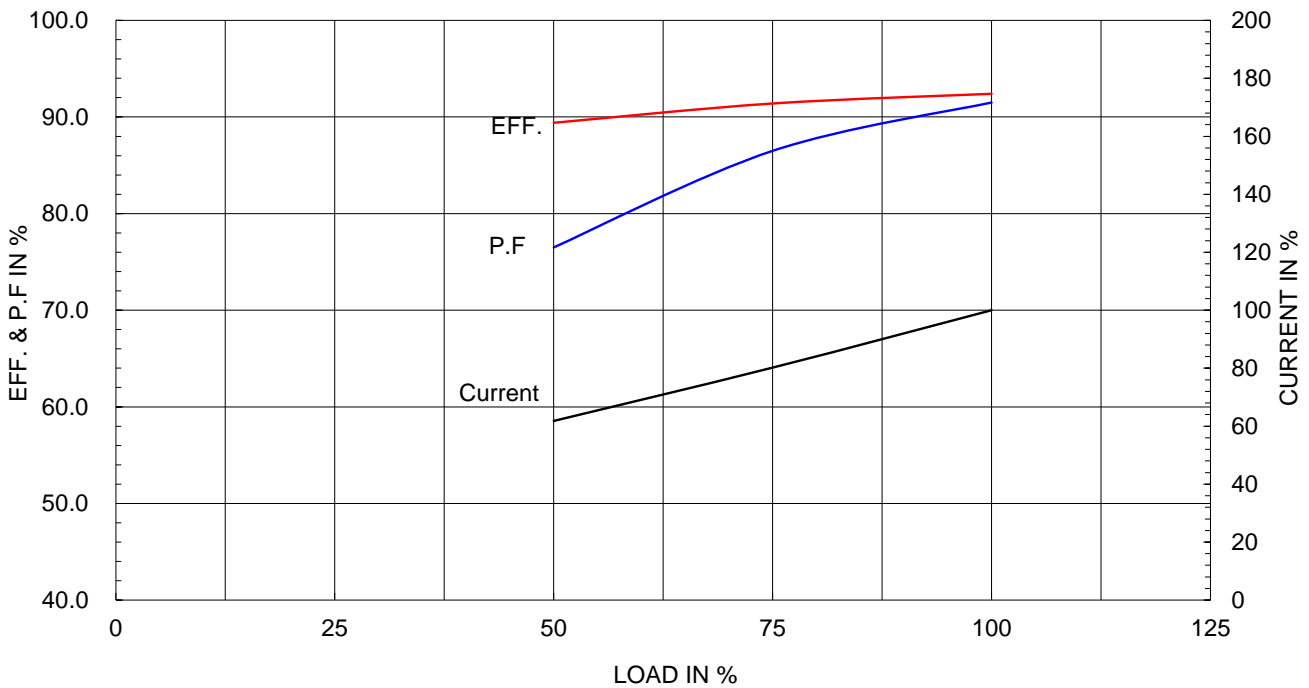
Type :	PJP
Full Load Torque :	59.4 lb.ft
Load moment of Inertia (J) :	38.727 lb.ft2
Motor moment of Inertia (J) :	3.987 lb.ft2

30kW	40HP	2 P	60 Hz
Speed at Full Load :			3560 RPM
Rated Voltage	575V	460V	230V
Full Load Current	35.6A	44.5A	89.1A

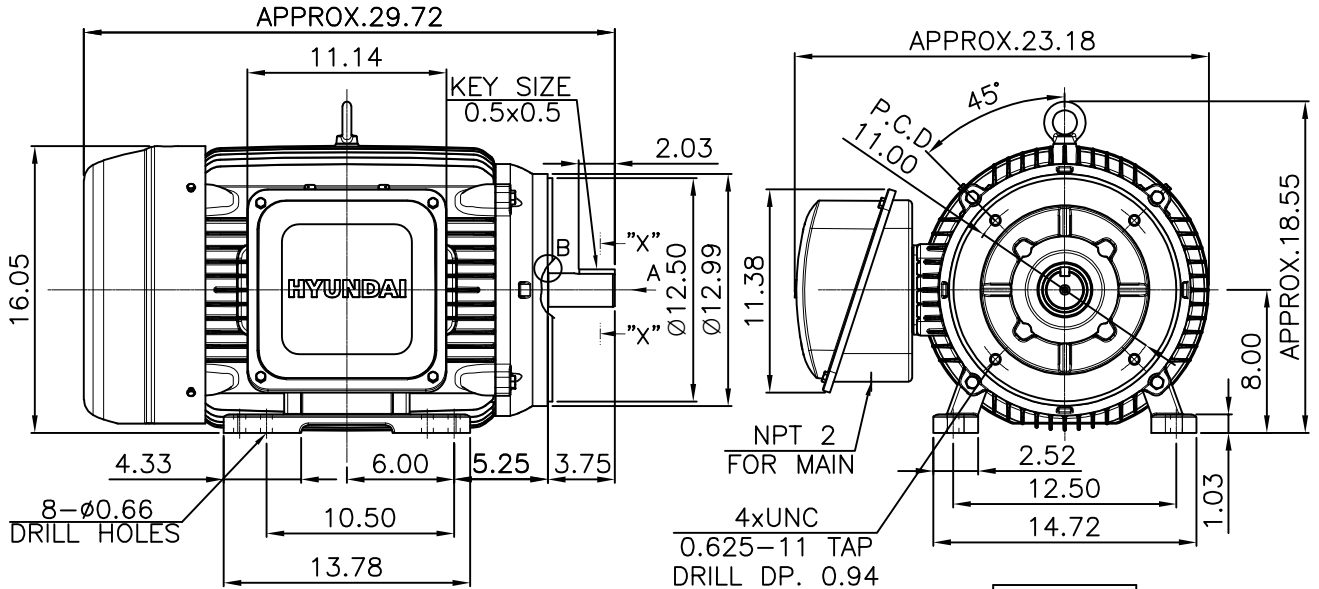
SPEED VS TORQUE & CURRENT CURVE



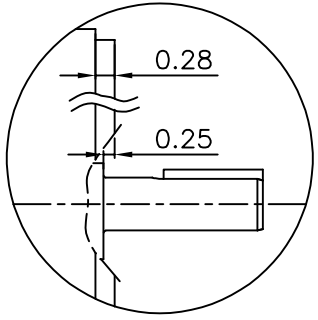
OUTPUT VS EFF., P.F & CURRENT CURVE



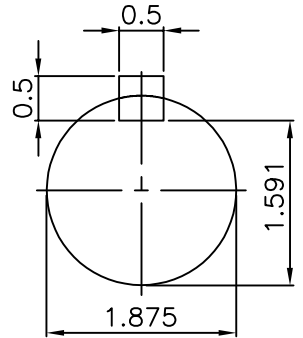
▽	50S	REV	DATE	CONTENTS	REVD BY	CHKD BY	CHKD BY	APPD BY
▽▽	12.5S							
▽▽▽	3.2S							
▽▽▽▽	0.4S							



VIEW "A"



DETAIL - B



SECTION "X-X"

SCALE 5/11

**NOTE**

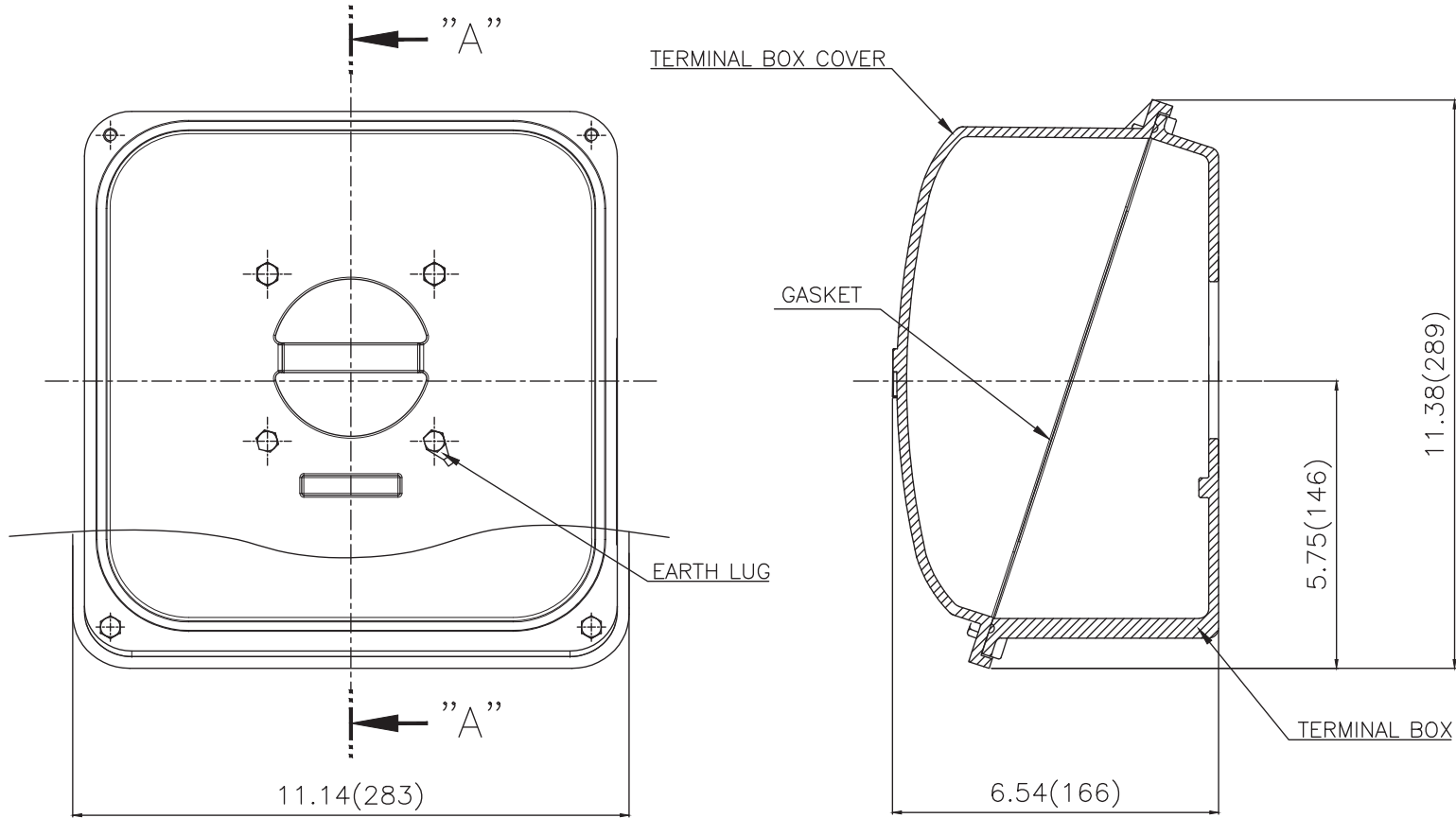
[TOLERANCE]

1. CENTER HEIGHT : +0.00inch - 0.03inch
2. SHAFT DIAMETER : +0.000inch - 0.001inch
3. KEYWAY DEPTH : +0.000inch - 0.015inch

APPD BY	S.Y.KIM	UNIT	mm	SUBJECT	NEMA 324TSC	DWG SIZE	
CHKD BY	R.G.KIM	SCALE	1/11	TITLE	OUTLINE	A4 ( 1:11 )	
CHKD BY		PROJEC'N	3rd Angle				
DSND BY	주유림	DATE	2021-04-29				
				REF. NO	.	Sheet No.	of
				DWG NO	LM-T2324C4CLV23	Revision No.	0



Cls. I&II, Div. 2  
IEEE 841



SEC. "A"-"A"

▽	50S
▽▽	12.5S
▽▽▽	3.2S
▽▽▽▽	0.4S

REV	DATE	CONTENTS	REVD BY	CHKD BY	CHKD BY	APPD BY

일반가공공차		일반재공공차	
1-4	±0.1	6-30	±0.5
4-18	±0.2	30-120	±0.8
18-63	±0.3	120-315	±1.2
63-250	±0.5	315-1000	±2.0
250-	±0.8	1000-	±3.0

Q'TY	DESCRIPTION	MATERIAL	DIMENSION	WEIGHT	PART NO.	REMARK	NO.
APPD BY	S.Y.KIM	UNIT	inch(mm)	SUBJECT	FR. 320 (CAST IRON)	DWG SIZE	
CHKD BY		SCALE	1/2.5	TITLE	TERMINAL BOX ASS'Y		
CHKD BY	R.G.KIM	PROJEC'N	3rd Angle	DATE	2023-10-19		
DSND BY	배승희						
REF. NO		Sheet No.	of				
DWG NO	3M-248459	Revision No.	0				

