

Customer :  
Project Name :  
Project No. :  
Revision No. :

# SPECIFICATION for INDUCTION MOTOR



0		For Bidding			
No.	DATE	DESCRIPTION	PREPARED BY	CHECKED BY	APPROVED BY



# AC INDUCTION MOTOR DATA SHEET

Catalog No.	HES50-18-326T	Item No.		Rev. No.	[     ]
Project Name		Project No.		Quantity	sets

GENERAL SPECIFICATION			PERFORMANCE DATA			
Frame Size	326T		Rated Output	37 kW      50 HP		
Type	PJP		Number of Poles	4		
Enclosure(Protection)	Totally Enclosed / IP55		Rotor Type	Squirrel Cage		
Method of Cooling	IC411(FC)		Starting Method*	D.O.L		
Rated Frequency	60 Hz		Rated Voltage	575 V	460 V	230 V
Number of Phases	3		Current	Full Load	46.8 A	58.5 A
Insulation Class	F			Locked-rotor**	830 %	830 %
Temp. Rise at full load (by resistance method)			Efficiency			
at 1.0 S.F			80 deg. C		50% Load	
					75% Load	
					100% Load	
Motor Location	<input type="checkbox"/> Indoor <input type="checkbox"/> Outdoor		Power Factor(p.u)			
Altitude	Less than 1,000 meter		50% Load		0.690	
Relative Humidity	Less than 80 %		75% Load		0.790	
Ambient Temp.	40 deg. C (Max.)		100% Load		0.840	
Duty Type	Continuous ( S1 )		Speed at Full Load			
Service Factor	1.15		1780 r.p.m			
Mounting	B3		Torque			
Bearing	Type	Anti-Friction	Full Load		146.4 lb.ft	
	DE/N-DE	6313ZC3 / 6212ZC3	Locked-rotor**		170 %	
	Lubricant	Grease(Polyrex-EM)	Breakdown**		220 %	
External Thrust	Not applicable		Moment of Inertia (J)			
Coupling Method	<input checked="" type="checkbox"/> Direct <input type="checkbox"/> V-belt		Load(Max.)		278.234 lb.ft2	
Shaft Extension	Single		Motor		8.307 lb.ft2	
Terminal Box	Main	Cast Iron	Sound Pressure Level (No-load & mean value at 1m from motor)			
	Aux.	No	74 dB(A)			
	Location	Refer to Outline Drawing	Vibration			
Application			3.8 mm/sec (peak)			
Area classification	Hazardous		Permissible number of consecutive starts		Cold    3 times	
Type of Ex-Protection	Class I&II, Division 2				Hot     2 times	
Applicable Standard	NEMA MG1, CSA C390		Paint	Munsell No.	4.0PB5.4/5.5(VL-451)	

ACCESSORIES

SUBMITTAL DRAWING			
Outline Dimension Drawing		Motor Weight(Approx.)	
B3	LM-T2326B3PLV23	560 lb.	

SPARE PARTS

REMARK				
1. Premium efficiency according to NEMA MG1 2. Inverter Duty @ 1.0 Service Factor & F Temperature rise -. 10:1 VT (20:1 VT at 50% load) -. 10:1 CT -. CHP up to 1.5 times base speed, NEMA MG1 Part31 3. CSA Certification -. Class I, Division 2, Group A, B, C & D -. Class II, Division 2 Group E, F & G (Group E : up to 320Fr.) 4. Service Factor 1.15 and Temperature rise B are applicable under the condition of sine wave power. 5. Service Factor 1.25 is applicable to motors of 100HP or less with temperature rise F & Non-Hazardous.				
Date	DSND	CHKD	CHKD	APPD
2024-07-13	S.H. Lee	I.K. Kim	R.G. Kim	S.W. Kim

[Note] Others not mentioned in this data sheet shall be in accordance with maker standard.  
 Above technical data are only design values and shall be guaranteed with tolerance of applicable standard.  
 Inspection and performance test shall be done according to maker standard, if not mentioned.  
 \* In case of Inverter-Fed Motor, performance data is based on sine wave tests. It may be different from test data of Inverter combined motor.  
 \*\* Data is based on rated voltage & frequency and is expressed as a percentage of full-load value.

1	2	3	4
REV	DATE	CONTENTS	REVD BY

4.72

**CROWN TRITON G2**  
Premium Efficiency AC 3 Phase Motor







50HP	4P	230/460V	Cat. No.	HES50-18-326T			
Model	HLS326SR23		INS. Class	F	HD-F1	Amps	117/58.5
Type	HLS	Duty	CONT	Code	J	Amb.	40°C
Frame	326T	Encl.	TEFC	S.F.	1.15	RPM	1780
Bearing	Drive	6313ZC3		S.F.1.25 (When 100HP or less, Temp Rise F & Non-Hazardous)		3/4 Eff.	93.5%
	Opp.	6212ZC3		S.F.1.00 (10:1 C.T., 20:1 V.T., NEMA-MG1 Part31)		NEMA Design	B Torque
Usable at	50Hz 40HP 380V 63.8A 1480rpm S.F.: 1.0 Eff.: 92.3% Code: J						
	50Hz 40HP 400/415V 62.2/61.4A 1480/1480rpm S.F.: 1.0 Eff.: 92.3/92.3% Code: K/L						
CSA Certified for	Model	LATER		Type	PJP	Temp. Code	
		CLASS I, Div. 2, Gr. A, B, C & D	CLASS II, Div. 2 Gr. E, F & G			Amb. 40°C	T3C (160°C)
		CLASS I, Zone 2, Gr. IIA, IIB, & IIC	(Gr. E: Up to 320FR)			Amb. 55°C	T3A (180°C)
No.	-		Date	-		Weight	560 lb

4M-136024  
**MARINE DUTY IEEE45**

Made in Vietnam H4  
Designed By HYUNDAI, Korea



2.36

APPD BY	S.Y.KIM	UNIT	INCH	SUBJECT CSA Class I, Division2 Severe Duty (HES, 254-326) TITLE <b>NAMEPLATE DRAWING</b>	DWG SIZE
CHKD BY	I.K.KIM	SCALE	NONE		A4 ( 1:1 )
CHKD BY	R.G.KIM	PROJEC'N	3rd Angle		
DSND BY	S.H.LEE	DATE	2024.06.07		

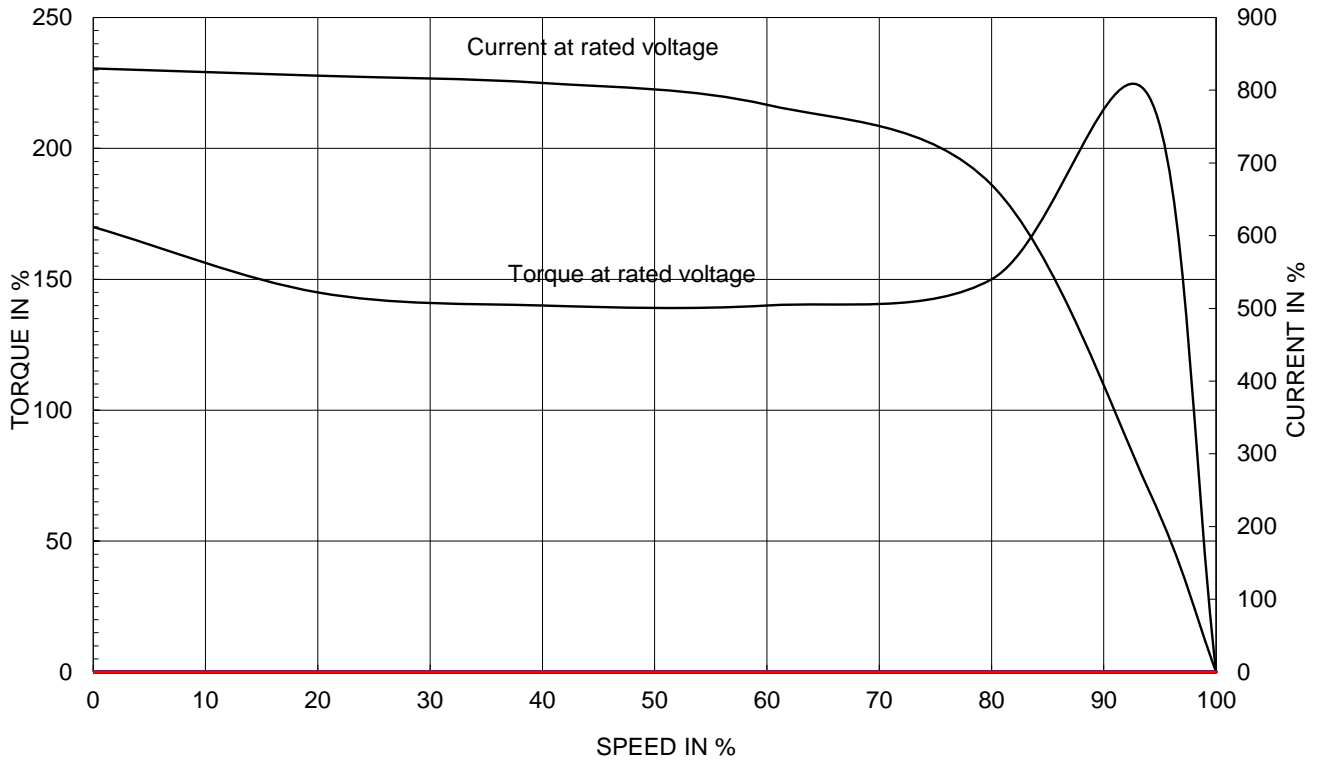


REF. NO	<b>4M-136024</b>	Sheet No.	of
DWG NO	<b>NP-HES50-18-326T</b>	Revision No.	<b>0</b>

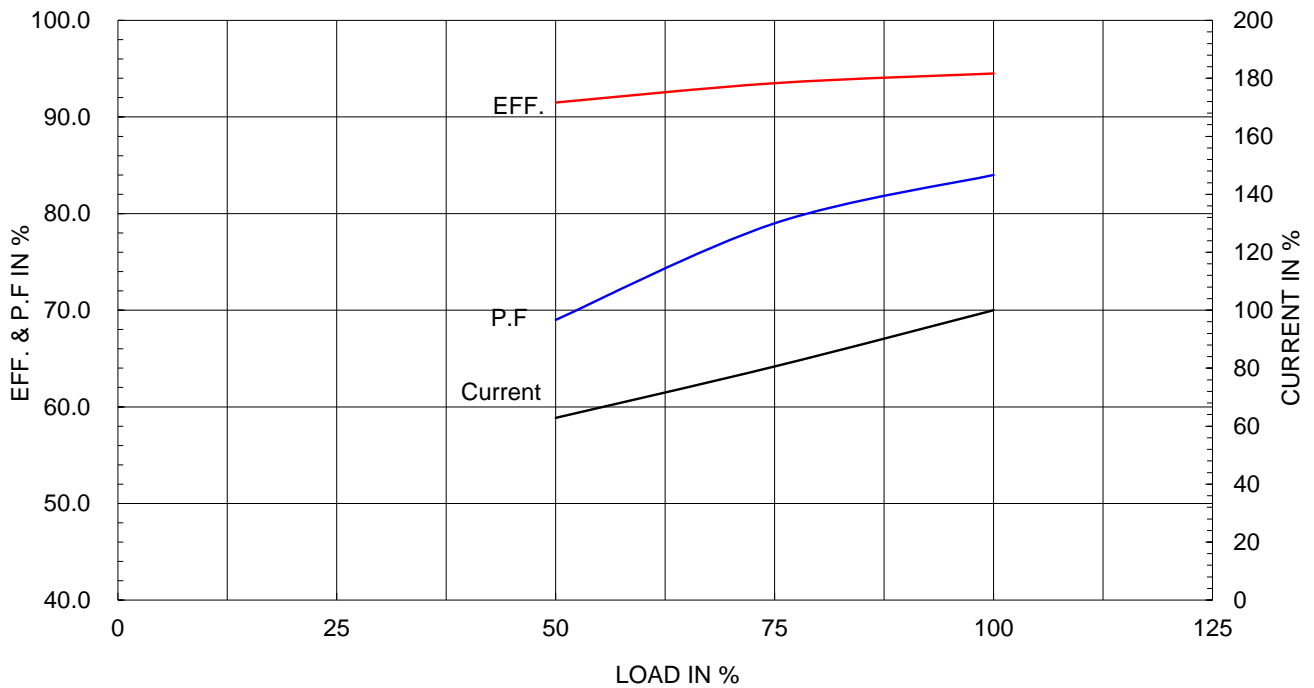
Type :	PJP
Full Load Torque :	146.4 lb.ft
Load moment of Inertia (J) :	278.234 lb.ft2
Motor moment of Inertia (J) :	8.307 lb.ft2

37kW 50HP	4 P	60 Hz
Speed at Full Load :		1780 RPM
Rated Voltage	575V	460V 230V
Full Load Current	46.8A	58.5A 117.0A

SPEED VS TORQUE & CURRENT CURVE



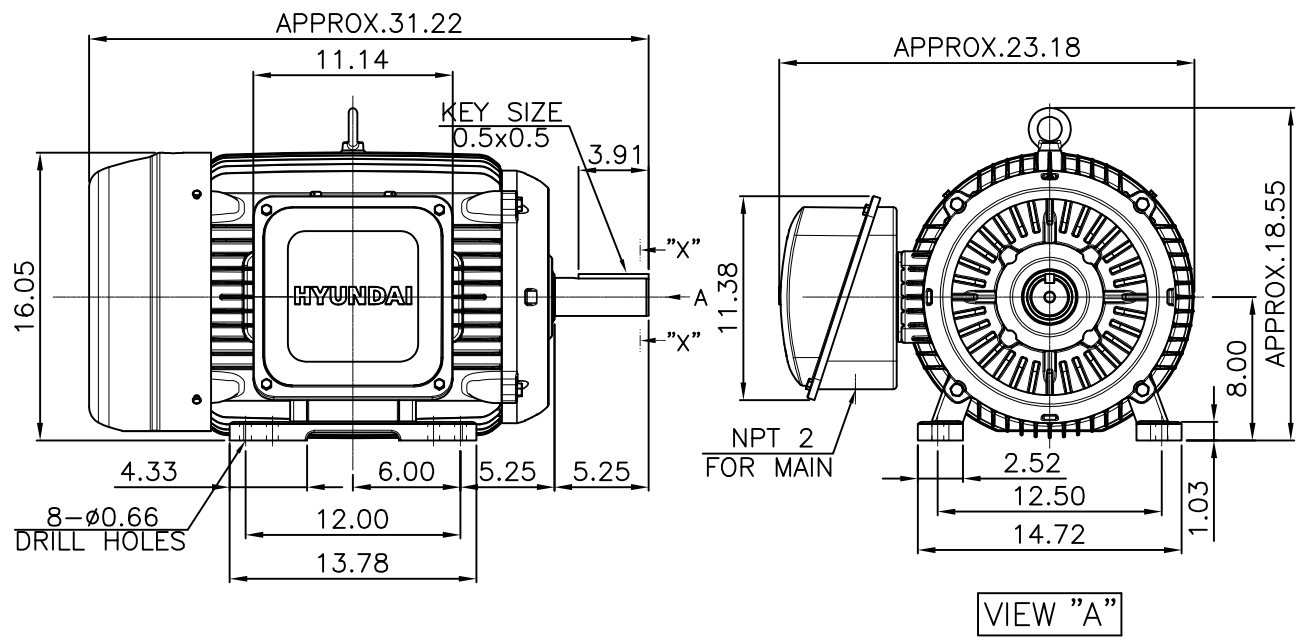
OUTPUT VS EFF., P.F & CURRENT CURVE



본 도면은 HD현대일렉트릭(주) 재산이며 허가없이 복사할 수 없음 (취급유의)

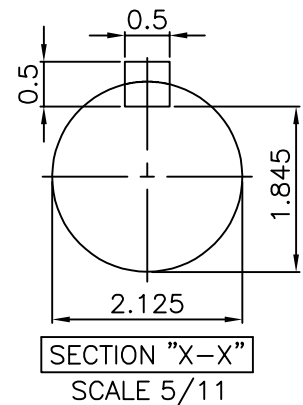
THIS DRAWING IS PROPRIETARY TO HYUNDAI ELECTRIC. NO PART OF THIS DRAWING MAYBE REPRODUCED WITHOUT THE PERMISSION OF HYUNDAI ELECTRIC.

▽	50S	REV	DATE	CONTENTS	REVD BY	CHKD BY	CHKD BY	APPD BY
▽▽	12.5S							
▽▽▽	3.2S							
▽▽▽▽	0.4S							



**NOTE**  
[TOLERANCE]

- CENTER HEIGHT : +0.00inch - 0.03inch
- SHAFT DIAMETER : +0.000inch - 0.001inch
- KEYWAY DEPTH : +0.000inch - 0.015inch

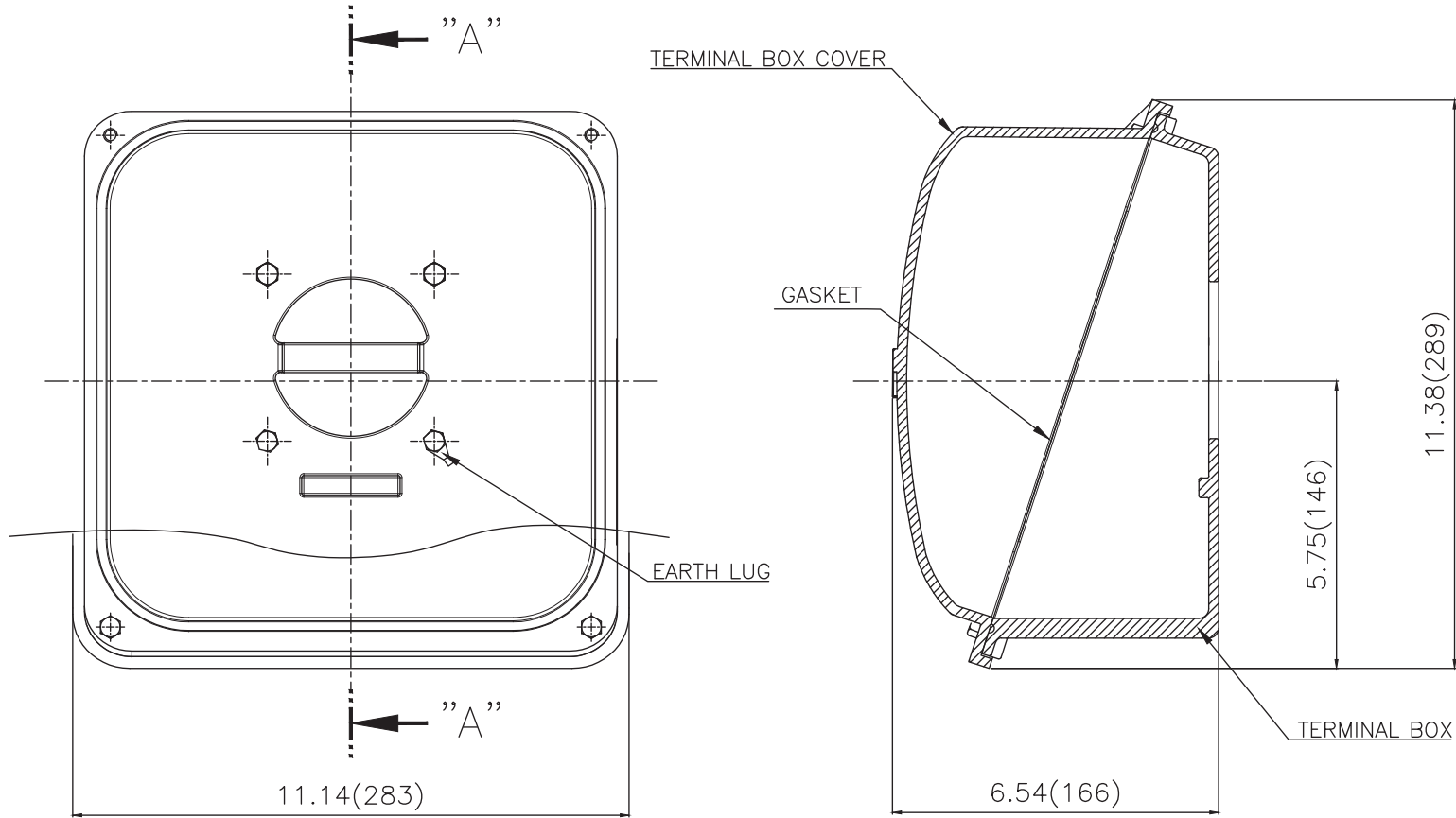


APPD BY	S.Y.KIM	UNIT	mm	SUBJECT	NEMA 326T	DWG SIZE	A4 ( 1:11 )
CHKD BY	R.G.KIM	SCALE	1/11	TITLE	OUTLINE		
CHKD BY		PROJEC'N	3rd Angle	REF. NO		Sheet No.	of
DSND BY	주유림	DATE	2021-04-28	DWG NO	LM-T2326B3PLV23	Revision No.	0





**Cls. I&II, Div. 2  
IEEE 841**



SEC. "A"-"A"

▽	50S
▽▽	12.5S
▽▽▽	3.2S
▽▽▽▽	0.4S

REV	DATE	CONTENTS	REVD BY	CHKD BY	CHKD BY	APPD BY

일반가공공차		일반재공공차	
1-4	±0.1	6-30	±0.5
4-18	±0.2	30-120	±0.8
18-63	±0.3	120-315	±1.2
63-250	±0.5	315-1000	±2.0
250-	±0.8	1000-	±3.0

Q'TY	DESCRIPTION	MATERIAL	DIMENSION	WEIGHT	PART NO.	REMARK	NO.
APPD BY	S.Y.KIM	UNIT	inch(mm)	SUBJECT	FR. 320 (CAST IRON)	DWG SIZE	A3 (1:2.5)
CHKD BY		SCALE	1/2.5	TITLE	TERMINAL BOX ASS'Y		
CHKD BY	R.G.KIM	PROJEC'N	3rd Angle	DATE	2023-10-19		
DSND BY	배승희	DATE					
REF. NO		Sheet No.	of				
DWG NO	3M-248459	Revision No.	0				

